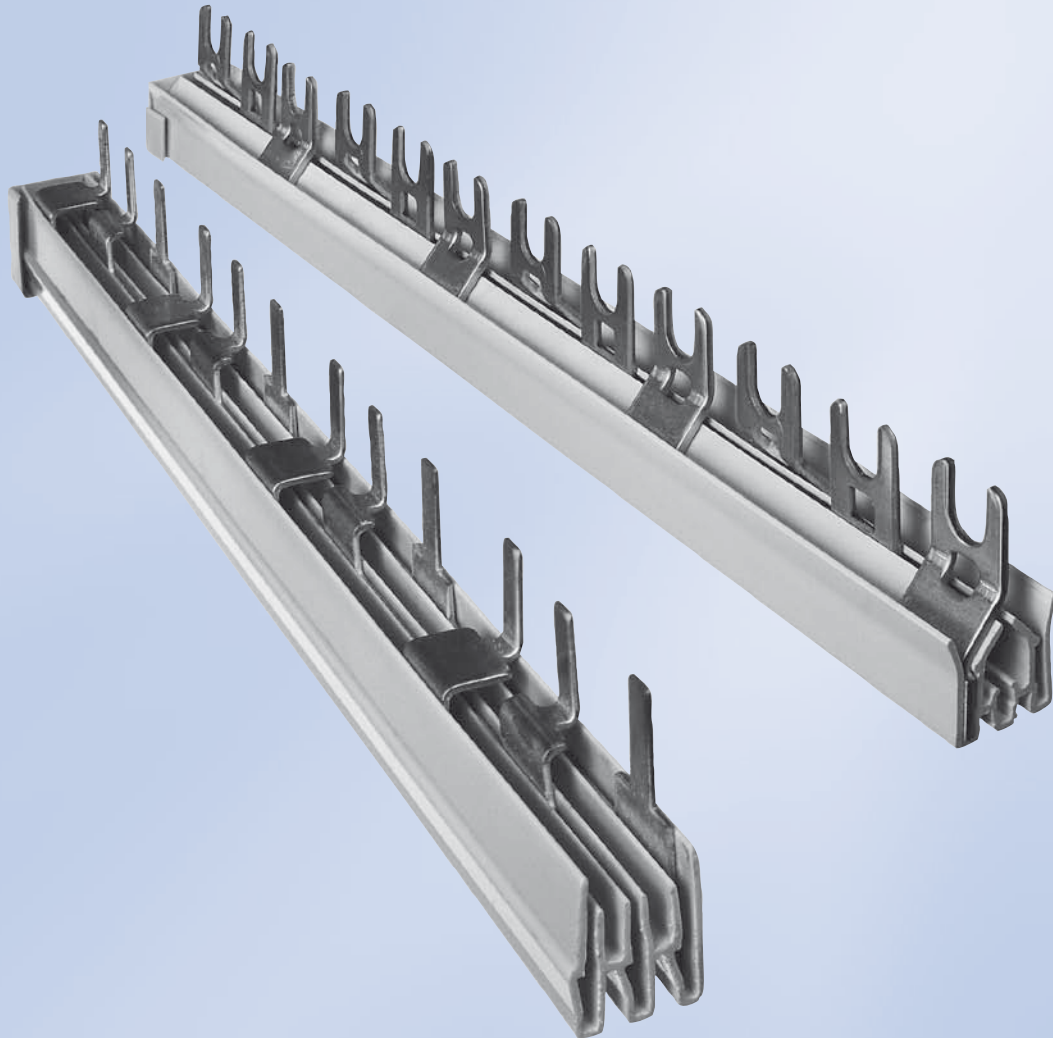


3-polige Sammelschienen *3-phase busbars*

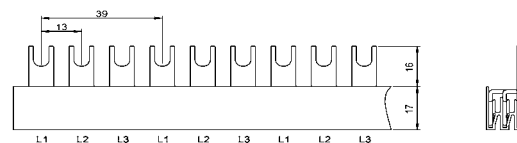


Standardschienen (mit gleichem Schrittabstand)

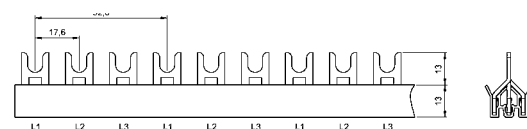
Standard busbars (with equal pitch)

Artikel-Nr.	Bezeichnung	Anzahl Phasen	Fahnenform Gabel/Steg	Querschnitt (mm ²)	Bauform	Anzahl Fahnen	Modulbreite (mm)	Länge (mm)	Fabrikationszuordnung	Passende Endkappen
Article-No.	Type	No. of phases	Fork/pin type G/S	Cross section (mm ²)	Design	No. of poles	Module width (mm)	Length (mm)	Brand relation	Suitable end covers

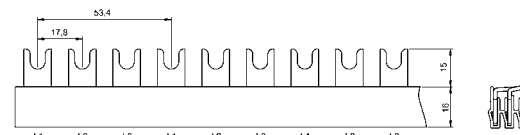
3-polige Sammelschiene 3-phase busbar



3G16L10C0A00-01	3921/10TE	3	G	16	L	10	13	130	Dg	A1
3G16L30C0A00-01	3921/30TE	3	G	16	L	30	13	390	Dg	A1
3G16L75C0A00-01	3921	3	G	16	L	75	13	975	Dg	A1



3G10T06A0D00-01	730T 6TE	3	G	10	T	06	17,6	105	Ag	A4
3G10T12A0D00-01	730T	3	G	10	T	12	17,6	210	Ag	A4
3G10T12A5D00-01	730T EK	3	G	10	T	12	17,6	210	Ag	Ek montiert
3G10T57A0D00-01	731T 57TE	3	G	10	T	57	17,6	1065	Ag	A4
3G10T60A0D00-01	731T	3	G	10	T	60	17,6	1065	Ag	A4
3G16T12A0D00-01	730T/16	3	G	16	T	12	17,6	210	Ag	A4
3G16T57A0D00-01	731T/16 57TE	3	G	16	T	57	17,6	1065	Ag	A4
3G16T60A0D00-01	731T/16	3	G	16	T	60	17,6	1065	Ag	A4



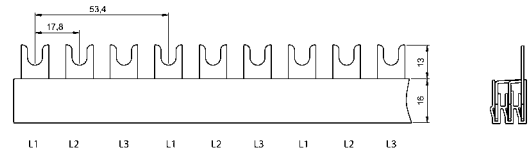
3G10L05S5A00-01	700/5TE EK	3	G	10	L	05	17,8	90	Cg	Ek montiert
3G10L06S5A00-01	700/6TE EK	3	G	10	L	06	17,8	105	Cg	Ek montiert
3G10L07S5A00-01	700/7TE EK	3	G	10	L	07	17,8	126	Cg	Ek montiert
3G10L08S5A00-01	700/8TE EK	3	G	10	L	08	17,8	150	Cg	Ek montiert
3G10L09S5A00-01	700/9TE EK	3	G	10	L	09	17,8	172	Cg	Ek montiert
3G10L10S5A00-01	700/10TE EK	3	G	10	L	10	17,8	180	Cg	Ek montiert
3G10L11S5A00-01	700/11TE EK	3	G	10	L	11	17,8	200	Cg	Ek montiert
3G10L12S0A00-01	700	3	G	10	L	12	17,8	210	Cg	A1
3G10L12S5A00-01	700 EK	3	G	10	L	12	17,8	210	Cg	Ek montiert
3G10L13S0A00-01	700/13TE	3	G	10	L	13	17,8	234	Cg	A1
3G10L14S0A00-01	700/14TE	3	G	10	L	14	17,8	251	Cg	A1
3G10L15S0A00-01	700/15TE	3	G	10	L	15	17,8	270	Cg	A1
3G10L16S0A00-01	700/16TE	3	G	10	L	16	17,8	290	Cg	A1
3G10L17S0A00-01	700/17TE	3	G	10	L	17	17,8	305	Cg	A1

Standardschienen (mit gleichem Schrittabstand)

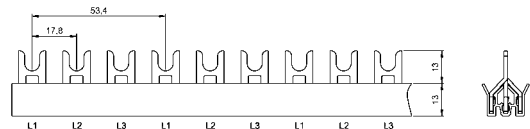
Standard busbars (with equal pitch)

Artikel-Nr.	Bezeichnung	Anzahl Phasen	Fahnenform Gabel/Steg	Querschnitt (mm ²)	Bauform	Anzahl Fahnen	Modulbreite (mm)	Länge (mm)	Fabrikationszuordnung	Passende Endkappen
Article-No.	Type	No. of phases	Fork/pin type G/S	Cross section (mm ²)	Design	No. of poles	Module width (mm)	Length (mm)	Brand relation	Suitable end covers

3-polige Sammelschiene 3-phase busbar



3G10L18S0A00-01	700/18TE	3	G	10	L	18	17,8	320	Cg	A1
3G10L19S0A00-01	700/19TE	3	G	10	L	19	17,8	340	Cg	A1
3G10L21S0A00-01	700/21TE	3	G	10	L	21	17,8	380	Cg	A1
3G10L57S0A00-01	710/57	3	G	10	L	57	17,8	1014	Cg	A1
3G10L60S0A00-01	710	3	G	10	L	60	17,8	1060	Cg	A1
3G16L12S0A00-01	700/16	3	G	16	L	12	17,8	210	Cg	A1
3G16L12S5A00-01	700/16EK	3	G	16	L	12	17,8	210	Cg	Ek montiert
3G16L26S0A00-01	710/16/26TE	3	G	16	L	26	17,8	465	Cg	A1
3G16L57S0A00-01	710/16/57	3	G	16	L	57	17,8	1014	Cg	A1
3G16L60S0A00-01	710/16	3	G	16	L	60	17,8	1060	Cg	A1
3G35L57S0A00-01	5988	3	G	35	L	57	17,8	1014	Cg	A26
3G50L57S0A00-01	7988	3	G	50	L	57	17,8	1014	Cg	A36



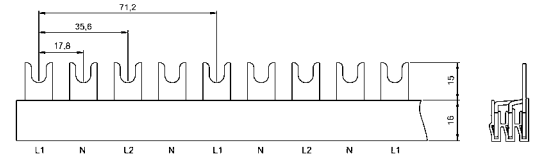
3G10T06S0D00-01	701T/6TE	3	G	10	T	06	17,8	108	Cg	A4
3G10T06S5D00-01	701T/6TE EK	3	G	10	T	06	17,8	108	Cg	Ek montiert
3G10T07S0D00-01	701T/7TE	3	G	10	T	07	17,8	125	Cg	A4
3G10T08S0D00-01	701T/8TE	3	G	10	T	08	17,8	144	Cg	A4
3G10T09S0D00-01	701T/9TE	3	G	10	T	09	17,8	161	Cg	A4
3G10T09S5D00-01	701T/9TE EK	3	G	10	T	09	17,8	161	Cg	Ek montiert
3G10T10S0D00-01	701T/10TE	3	G	10	T	10	17,8	179	Cg	A4
3G10T11S0D00-01	701T/11TE	3	G	10	T	11	17,8	197	Cg	A4
3G10T12S0D00-01	701T	3	G	10	T	12	17,8	210	Cg	A4
3G10T12S5D00-01	701T EK	3	G	10	T	12	17,8	210	Cg	Ek montiert
3G10T57S0D00-01	711T/57	3	G	10	T	57	17,8	1015	Cg	A4
3G10T60S0D00-01	711T	3	G	10	T	60	17,8	1070	Cg	A4
3G16T06S5D00-01	701T/16 6TE EK	3	G	16	T	06	17,8	108	Cg	Ek montiert
3G16T09S5D00-01	701T/16 9TE EK	3	G	16	T	09	17,8	161	Cg	Ek montiert
3G16T12S0D00-01	701T/16	3	G	16	T	12	17,8	212	Cg	A4
3G16T57S0D00-01	711T/16/57TE	3	G	16	T	57	17,8	1000	Cg	A4
3G16T60S0D00-01	711T/16	3	G	16	T	60	17,8	1000	Cg	A4

Standardschienen (mit gleichem Schrittabstand)

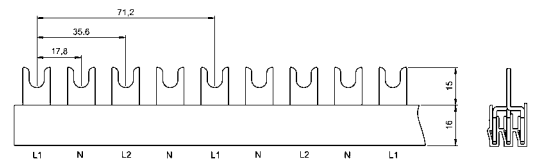
Standard busbars (with equal pitch)

Artikel-Nr.	Bezeichnung	Anzahl Phasen	Fahnenform Gabel/Steg	Querschnitt (mm ²)	Bauform	Anzahl Fahnen	Modulbreite (mm)	Länge (mm)	Fabrikatzuordnung	Passende Endkappen
Article-No.	Type	No. of phases	Fork/pin type G/S	Cross section (mm ²)	Design	No. of poles	Module width (mm)	Length (mm)	Brand relation	Suitable end covers

3-polige Sammelschiene 3-phase busbar

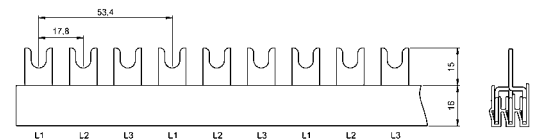


3G10L57S0A0N-01	3258	3	G	10	L	56	17,8	1000	Cg	A1
3G16L57S0A0N-01	3261	3	G	16	L	56	17,8	1000	Cg	A1



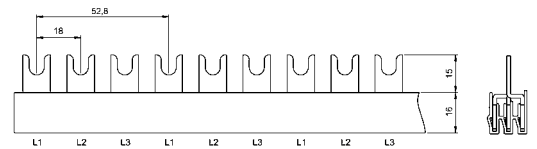
3G10T57S0A0N-01	3264	3	G	10	T	56	17,8	1000	Cg	A1
3G16T57S0A0N-01	3267	3	G	16	T	56	17,8	1000	Cg	A1

3-polige Sammelschiene, ausbrechbar 3-phase busbar, removable



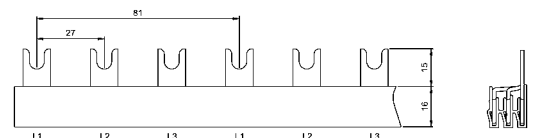
3G10T57S0A0A-01	3726	3	G	10	T	57	17,8	1020	Cg	A1
3G16T57S0A0A-01	3729	3	G	16	T	57	17,8	1020	Cg	A1

3-polige Sammelschiene 3-phase busbar



3G10T12K0Z00-01	7001T	3	G	10	T	12	18	212	Kg	A1
3G10T57K0Z00-01	7101T	3	G	10	T	57	18	1024	Kg	A1
3G16T12K0A00-01	7001T16	3	G	16	T	12	18	212	Kg	A1
3G16T57K0A00-01	7101T16	3	G	16	T	57	18	1024	Kg	A1

3-polige Sammelschiene für DO Elemente 3-phase busbar for DO elements



3G10L09N0A00-01	702	3	G	10	L	09	27	231	Ng	A1
3G10L39N0A00-01	712	3	G	10	L	39	27	1045	Ng	A1
3G16L09N0A00-01	702/16	3	G	16	L	09	27	231	Ng	A1
3G16L39N0A00-01	712/16	3	G	16	L	39	27	1045	Ng	A1

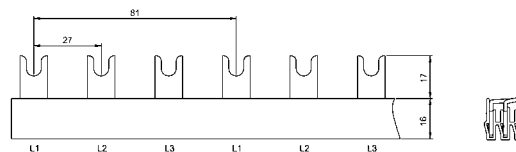
Standardschienen (mit gleichem Schrittabstand)

Standard busbars (with equal pitch)

Artikel-Nr.	Bezeichnung	Anzahl Phasen	Fahnenform Gabel/Steg	Querschnitt (mm ²)	Bauform	Anzahl Fahnen	Modulbreite (mm)	Länge (mm)	Fabrikatszuordnung	Passende Endkappen
Article-No.	Type	No. of phases	Fork/pin type G/S	Cross section (mm ²)	Design	No. of poles	Module width (mm)	Length (mm)	Brand relation	Suitable end covers

3-polige Sammelschiene für DO Elemente, längere Gabel

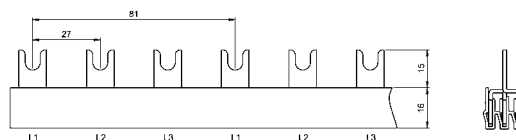
3-phase busbar for DO elements, longer fork



3G16L09N0A0L-01	702/16SO	3	G	16	L	09	27	231	Ng	A1
3G16L39N0A0L-01	712/16SO	3	G	16	L	39	27	1045	Ng	A1
3G35L39N0A00-01	5989	3	G	35	L	39	27	1045	Ng	A26
3G50L39N0A00-01	7989	3	G	50	L	39	27	1045	Ng	A36

3-polige Sammelschiene für DO Elemente

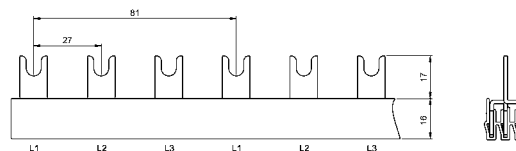
3-phase busbar for DO elements



3G10T08N5A00-01	712T 8TE EK	3	G	10	T	08	27	208	Ng	EK montiert
3G10T09N0A00-01	702T	3	G	10	T	09	27	231	Ng	A1
3G10T39N0A00-01	712T	3	G	10	T	39	27	1045	Ng	A1
3G16T08N5A00-01	712T 16 8TE EK	3	G	16	T	08	27	208	Ng	EK montiert
3G16T09N0A00-01	702T/16	3	G	16	T	09	27	231	Ng	A1
3G16T39N0A00-01	712T/16	3	G	16	T	39	27	1045	Ng	A1

3-polige Sammelschiene für DO Elemente, längere Gabel

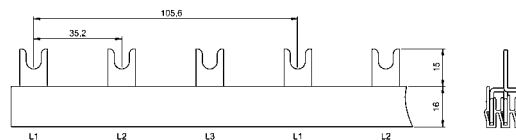
3-phase busbar for DO elements, longer fork



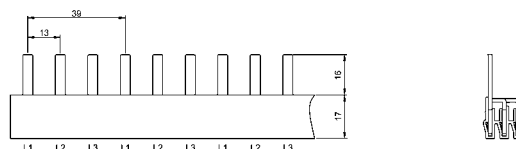
3G16T09N0A0L-01	702T/16SO	3	G	16	T	09	27	231	Ng	A1
3G16T39N0A0L-01	712T/16SO	3	G	16	T	39	27	1045	Ng	A1

3-polige Sammelschiene

3-phase busbar



3G10T06X0A00-01	3358	3	G	10	T	06	35,2	157		A1
3G10T30AX0A00-01	3361	3	G	10	T	30	35,2	1000		A1



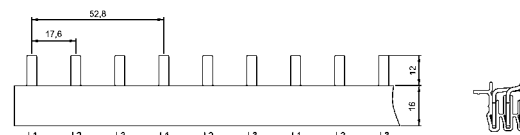
3S16L75C0A00-01	3921S	3	S	16	L	75	13	975	Ds	A1
-----------------	-------	---	---	----	---	----	----	-----	----	----

Standardschienen (mit gleichem Schrittabstand)

Standard busbars (with equal pitch)

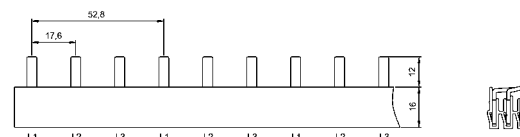
Artikel-Nr.	Bezeichnung	Anzahl Phasen	Fahnenform Gabel/Steg	Querschnitt (mm ²)	Bauform	Anzahl Fahnen	Modulbreite (mm)	Länge (mm)	Fabrikationszuordnung	Passende Endkappen
Article-No.	Type	No. of phases	Fork/pin type G/S	Cross section (mm ²)	Design	No. of poles	Module width (mm)	Length (mm)	Brand relation	Suitable end covers

3-polige Sammelschiene, mit Funktionssteg 3-phase busbar, with functional bar



3S10L06A5S00-01	700SPM 6TE EK	3	S	10	L	06	17,6	105	Bs	Ek montiert
3S10L09A5S00-01	700SPM 9TE EK	3	S	10	L	09	17,6	172	Bs	Ek montiert
3S10L12A0S00-01	700SPM	3	S	10	L	12	17,6	210	Bs	A5
3S10L12A5S00-01	700SPM EK	3	S	10	L	12	17,6	210	Bs	Ek montiert
3S10L15A5S00-01	700SPM EK 15TE	3	S	10	L	15	17,6	255	Bs	Ek montiert
3S10L18A5S00-01	700SPM EK 18TE	3	S	10	L	18	17,6	310	Bs	Ek montiert
3S10L21A0S00-01	700SPM 21TE	3	S	10	L	21	17,6	375	Bs	A5
3S10L24A0S00-01	700SPM 24TE	3	S	10	L	24	17,6	414	Bs	A5
3S10L60A0S00-01	710SPM	3	S	10	L	60	17,6	1060	Bs	A5
3S16L06A5S00-01	700SPM/16 6TE EK	3	S	16	L	06	17,6	105	Bs	Ek montiert
3S16L09A5S00-01	700SPM/16 9TE EK	3	S	16	L	09	17,6	172	Bs	Ek montiert
3S16L12A0S00-01	700SPM/16	3	S	16	L	12	17,6	210	Bs	A5
3S16L12A5S00-01	700SPM/16 EK	3	S	16	L	12	17,6	210	Bs	Ek montiert
3S16L15A5S00-01	700SPM/16 15TE EK	3	S	16	L	15	17,6	255	Bs	Ek montiert
3S16L18A5S00-01	700SPM/16 18TE EK	3	S	16	L	18	17,6	310	Bs	Ek montiert
3S16L21A0S00-01	700SPM/16 21TE	3	S	16	L	21	17,6	375	Bs	A5
3S16L24A0S00-01	700SPM/16 24TE	3	S	16	L	24	17,6	414	Bs	A5
3S16L60A0S00-01	710SPM/16	3	S	16	L	60	17,6	1060	Bs	A5

3-polige Sammelschiene 3-phase busbar



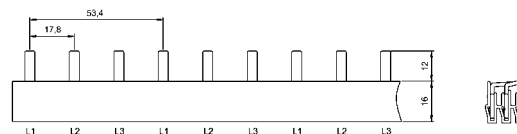
3S10L57A0A00-01	731S 57TE	3	S	10	L	57	17,6	1065	As	A1
3S16L57A0A00-01	731S/16 57TE	3	S	16	L	57	17,6	1065	As	A1

Standardschienen (mit gleichem Schrittabstand)

Standard busbars (with equal pitch)

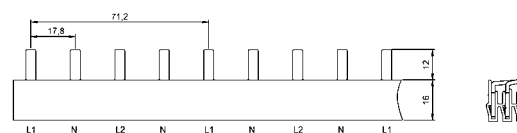
Artikel-Nr.	Bezeichnung	Anzahl Phasen	Fahnenform Gabel/Steg	Querschnitt (mm ²)	Bauform	Anzahl Fahnen	Modulbreite (mm)	Länge (mm)	Fabrikatszuordnung	Passende Endkappen
Article-No.	Type	No. of phases	Fork/pin type G/S	Cross section (mm ²)	Design	No. of poles	Module width (mm)	Length (mm)	Brand relation	Suitable end covers

3-polige Sammelschiene 3-phase busbar



3S10L12S0A00-01	700S	3	S	10	L	12	17,8	210	Cs	A1
3S10L18S0A00-01	710S18TE	3	S	10	L	18	17,8	323	Cs	A1
3S10L24S0A00-01	710S24TE	3	S	10	L	24	17,8	430	Cs	A1
3S10L57S0A00-01	710S/57	3	S	10	L	57	17,8	1014	Cs	A1
3S10L60S0A00-01	710S	3	S	10	L	60	17,8	1060	Cs	A1
3S16L06S5A00-01	700S/16/6TE EK	3	S	16	L	06	17,8	105	Cs	EK montiert
3S16L12S0A00-01	700S/16	3	S	16	L	12	17,8	210	Cs	A1
3S16L16S5A00-01	700S/16 16TE EK	3	S	16	L	16	17,8	282	Cs	EK montiert
3S16L18S0A00-01	700S/16 18TE	3	S	16	L	18	17,8	330	Cs	A1
3S16L20S0A00-01	700S/16 20TE	3	S	16	L	20	17,8	354	Cs	A1
3S16L57S0A00-01	710S/16/57	3	S	16	L	57	17,8	1012	Cs	A1
3S16L60S0A00-01	710S/16	3	S	16	L	60	17,8	1060	Cs	A1
3S35L57S0A00-01	5988S	3	S	35	L	57	17,8	1012	Cs	A26
3S50L57S0A00-01	7988S	3	S	50	L	57	17,8	1012	Cs	A36

3-polige Sammelschiene 3-phase busbar



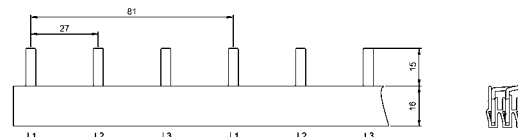
3S10L56S0A0N-01	3506	3	S	10	L	56	17,8	1000	Cs	A1
3S16L56S0A0N-01	3510	3	S	16	L	56	17,8	1000	Cs	A1

Standardschienen (mit gleichem Schrittabstand)

Standard busbars (with equal pitch)

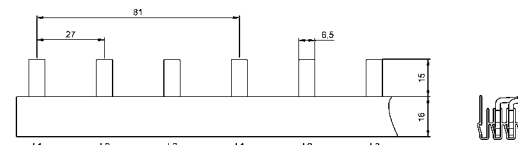
Artikel-Nr.	Bezeichnung	Anzahl Phasen	Fahnenform Gabel/Steg	Querschnitt (mm ²)	Bauform	Anzahl Fahnen	Modulbreite (mm)	Länge (mm)	Fabrikatzuordnung	Passende Endkappen
Article-No.	Type	No. of phases	Fork/pin type G/S	Cross section (mm ²)	Design	No. of poles	Module width (mm)	Length (mm)	Brand relation	Suitable end covers

3-polige Sammelschiene für DO Elemente 3-phase busbar for DO elements



3S10L09N0A00-01	702S	3	S	10	L	09	27	231	Ns	A1
3S10L39N0A00-01	712S	3	S	10	L	39	27	1045	Ns	A1
3S16L06N0A00-01	702S/16 6TE	3	S	16	L	06	27	150	Ns	A1
3S16L09N0A00-01	702S/16	3	S	16	L	09	27	231	Ns	A1
3S16L09N5A00-01	702S/16 EK	3	S	16	L	09	27	231	Ns	Ek montiert
3S16L12N0A00-01	712S/16 12TE	3	S	16	L	12	27	312	Ns	A1
3S16L15N0A00-01	712S/16 15TE	3	S	16	L	15	27	394	Ns	A1
3S16L18N0A00-01	712S/16 18TE	3	S	16	L	18	27	474	Ns	A1
3S16L21N0A00-01	712S/16 21TE	3	S	16	L	21	27	555	Ns	A1
3S16L39N0A00-01	712S/16	3	S	16	L	39	27	1045	Ns	A1
3S30L39N0X40-01	712S/30	3	S	30	L	39	27	1040	Ns	A6
3S35L39N0A00-01	5989S	3	G	35	L	39	27	1045	Ns	A26
3S50L39N0A00-01	7989S	3	G	50	L	39	27	1045	Ns	A36

3-polige Sammelschiene für DO Elemente, breite Fahne 3-phase busbar for DO elements, wide lug

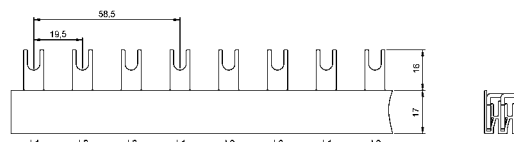


3S30L39N0X4G-01	3820	3	S	30	L	39	27	1040	Ns	A6
-----------------	------	---	---	----	---	----	----	------	----	----

Sammelschienen für Modulkombinationen mit Hilfsschalter H1 (halbe Modulbreite) *Busbars for module combinations with auxiliary switch H1 (half module)*

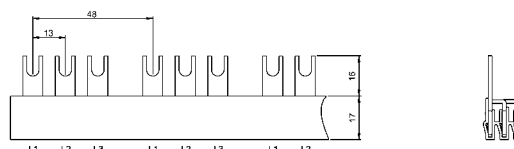
Artikel-Nr.	Bezeichnung	Anzahl Phasen	Fahnenform Gabel/Steg	Querschnitt (mm ²)	Bauform	Anzahl Fahnen	Modulbreite (mm)	Länge (mm)	Fabrikatszuordnung	Passende Endkappen
Article-No.	Type	No. of phases	Fork/pin type G/S	Cross section (mm ²)	Design	No. of poles	Module width (mm)	Length (mm)	Brand relation	Suitable end covers

3-polige Sammelschiene für 1-polige Sicherungsautomaten mit Hilfsschalter H1 *3-phase busbar for 1 pole circuit breakers with auxiliary switch H1*



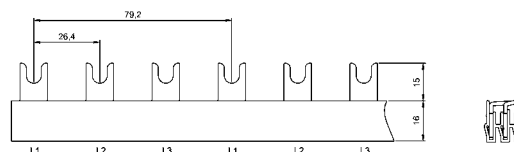
3G16L51C1A00-01	3928	3	G	16	L	51	13	995	Dg	A1
-----------------	------	---	---	----	---	----	----	-----	----	----

3-polige Sammelschiene für 3-polige Sammelschiene mit Hilfsschalter H1 *3-phase busbar for 3 pole circuit breaker with auxiliary switch H1*

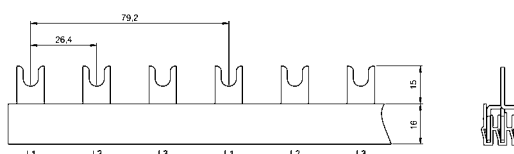


3G16L66C2A00-01	3927	3	G	16	L	66	13	1001	Dg	A1
-----------------	------	---	---	----	---	----	----	------	----	----

3-polige Sammelschiene für 1-polige Sicherungsautomaten mit Hilfsschalter H1 *3-phase busbar for 1 pole circuit breakers with auxiliary switch H1*

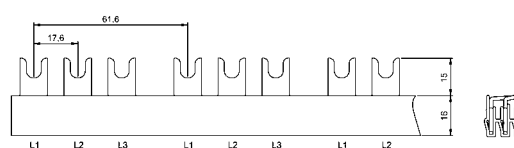


3G10L39A1A00-01	3669	3	G	10	L	39	17,6	1018	Ag	A1
3G16L39A1A00-01	3672	3	G	16	L	39	17,6	1018	Ag	A1



3G10T39A1A00-01	3675	3	G	10	T	39	17,6	1018	Ag	A1
3G16T39A1A00-01	3679	3	G	16	T	39	17,6	1018	Ag	A1

3-polige Sammelschiene für 3-polige Sicherungsautomaten mit Hilfsschalter H1 *3-phase busbar for 3 pole circuit breakers with auxiliary switch H1*



3G10L48A2A00-01	3146	3	G	10	L	48	17,6	990	Ag	A1
3G16L48A2A00-01	3149	3	G	16	L	48	17,6	990	Ag	A1

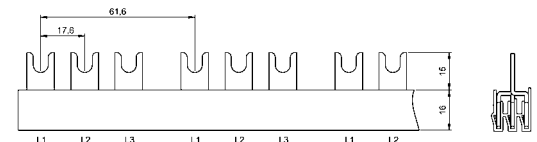
Sammelschienen für Modulkombinationen mit Hilfsschalter H1 (halbe Modulbreite)

Busbars for module combinations with auxiliary switch H1 (half module)

Artikel-Nr.	Bezeichnung	Anzahl Phasen	Fahnenform Gabel/Steg	Querschnitt (mm ²)	Bauform	Anzahl Fahnen	Modulbreite (mm)	Länge (mm)	Fabrikatzuordnung	Passende Endkappen
Article-No.	Type	No. of phases	Fork/pin type G/S	Cross section (mm ²)	Design	No. of poles	Module width (mm)	Length (mm)	Brand relation	Suitable end covers

3-polige Sammelschiene für 3-polige Sicherungsautomaten mit Hilfsschalter H1

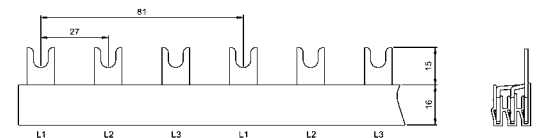
3-phase busbar for 3 pole circuit breakers with auxiliary switch H1



3G10T09A2A00-01	3151	3	G	10	T	09	17,6	176	Ag	A1
3G10T48A2A00-01	3152	3	G	10	T	48	17,6	990	Ag	A1
3G16T09A2A00-01	3154	3	G	16	T	09	17,6	176	Ag	A1
3G16T48A2A00-01	3155	3	G	16	T	48	17,6	990	Ag	A1

3-polige Sammelschiene für 1-polige Sicherungsautomaten mit Hilfsschalter H1

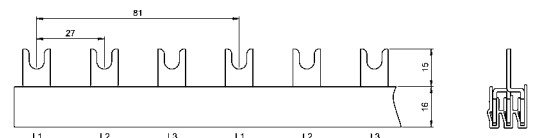
3-phase busbar for 1 pole circuit breakers with auxiliary switch H1



3G10L09S1A00-01	702	3	G	10	L	09	17,8	231	Cg	A1
3G10L39S1A00-01	712	3	G	10	L	39	17,8	1045	Cg	A1
3G16L09S1A00-01	702/16	3	G	16	L	09	17,8	231	Cg	A1
3G16L39S1A00-01	712/16	3	G	16	L	39	17,8	1045	Cg	A1

3-polige Sammelschiene für 1-polige Sicherungsautomaten mit Hilfsschalter H1

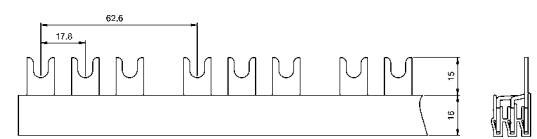
3-phase busbar for 1 pole circuit breakers with auxiliary switch H1



3G10T08S6A00-01	712T 8TE EK	3	G	10	T	08	17,8	208	Cg	Ek mont.
3G10T09S1A00-01	702T	3	G	10	T	09	17,8	231	Cg	A1
3G10T39S1A00-01	712T	3	G	10	T	39	17,8	1045	Cg	A1
3G16T08S6A00-01	712T 16 8TE EK	3	G	16	T	08	17,8	208	Cg	Ek mont.
3G16T09S1A00-01	702T/16	3	G	16	T	09	17,8	231	Cg	A1
3G16T39S1A00-01	712T/16	3	G	16	T	39	17,8	1045	Cg	A1

3-polige Sammelschiene für 3-polige Sicherungsautomaten mit Hilfsschalter H1

3-phase busbar for 3 pole circuit breakers with auxiliary switch H1

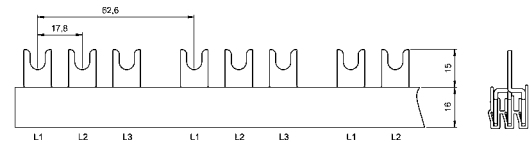


3G10L48S2A00-01	3122	3	G	10	L	48	17,8	990	Cg	A1
3G16L48S2A00-01	3125	3	G	16	L	48	17,8	990	Cg	A1

Sammelschienen für Modulkombinationen mit Hilfsschalter H1 (halbe Modulbreite) *Busbars for module combinations with auxiliary switch H1 (half module)*

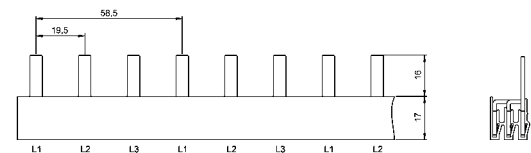
Artikel-Nr.	Bezeichnung	Anzahl Phasen	Fahnenform Gabel/Steg	Querschnitt (mm ²)	Bauform	Anzahl Fahnen	Modulbreite (mm)	Länge (mm)	Fabrikatzuordnung	Passende Endkappen
Article-No.	Type	No. of phases	Fork/pin type G/S	Cross section (mm ²)	Design	No. of poles	Module width (mm)	Length (mm)	Brand relation	Suitable end covers

3-polige Sammelschiene für 3-polige Sicherungsautomaten mit Hilfsschalter H1 *3-phase busbar for 3 pole circuit breakers with auxiliary switch H1*



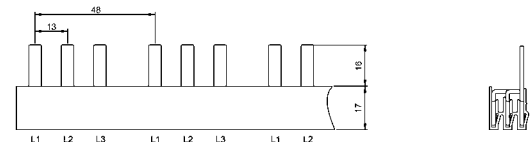
3G10T48S2A00-01	3128	3	G	10	T	48	17,8	990	Cg	A1
3G16T48S2A00-01	3131	3	G	16	T	48	17,8	990	Cg	A1

3-polige Sammelschiene für 1-polige Sicherungsautomaten mit Hilfsschalter H1 *3-phase busbar for 1 pole circuit breakers with auxiliary switch H1*



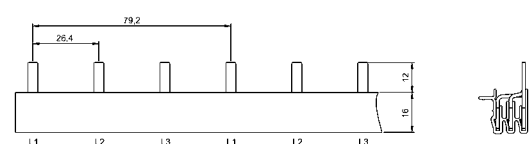
3S16L51C1A00-01	3918S	3	S	16	L	51	13	995	Ds	A1
-----------------	-------	---	---	----	---	----	----	-----	----	----

3-polige Sammelschiene für 3-polige Sicherungsautomaten mit Hilfsschalter H1 *3-phase busbar for 3 pole circuit breakers with auxiliary switch H1*



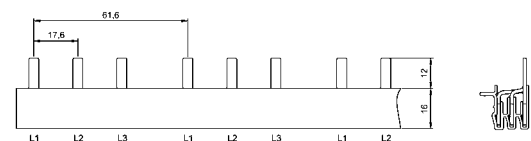
3S16L66C2A00-01	3927S	3	S	16	L	66	13	1001	Ds	A1
-----------------	-------	---	---	----	---	----	----	------	----	----

3-polige Sammelschiene für 1-polige Sicherungsautomaten mit Hilfsschalter H1, mit Funktionssteg *3-phase busbar for 1 pole circuit breakers with auxiliary switch, with functional bar*



3S10L39A1S00-01	3683 SPM	3	S	10	L	39	17,6	1045	Bs	A5
3S16L39A1S00-01	3686 SPM	3	S	16	L	39	17,6	1045	Bs	A5

3-polige Sammelschiene für 3-polige Sicherungsautomaten mit Hilfsschalter H1, mit Funktionssteg *3-phase busbar for 3 pole circuit breakers with auxiliary switch H1, with functional bar*



3S10L48A2S00-01	3458 SPM	3	S	10	L	48	17,6	990	Bs	A5
3S16L48A2S00-01	3462 SPM	3	S	16	L	48	17,6	990	Bs	A5

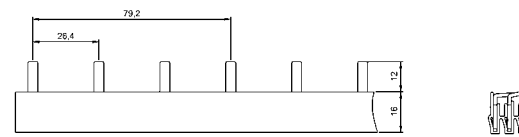
Sammelschienen für Modulkombinationen mit Hilfsschalter H1 (halbe Modulbreite)

Busbars for module combinations with auxiliary switch H1 (half module)

Artikel-Nr.	Bezeichnung	Anzahl Phasen	Fahnenform Gabel/Steg	Querschnitt (mm ²)	Bauform	Anzahl Fahnen	Modulbreite (mm)	Länge (mm)	Fabrikationszuordnung	Passende Endkappen
Article-No.	Type	No. of phases	Fork/pin type G/S	Cross section (mm ²)	Design	No. of poles	Module width (mm)	Length (mm)	Brand relation	Suitable end covers

3-polige Sammelschiene für 1-polige Sicherungsautomaten mit Hilfsschalter H1

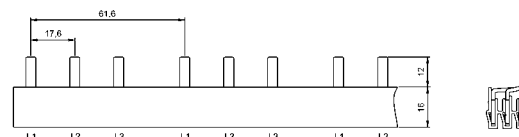
3-phase busbar for 1 pole circuit breakers with auxiliary switch H1



3S10L39A1A00-01	3683	3	S	10	L	39	17,6	1018	As	A1
3S16L39A1A00-01	3686	3	S	16	L	39	17,6	1018	As	A1

3-polige Sammelschiene für 3-polige Sicherungsautomaten mit Hilfsschalter H1

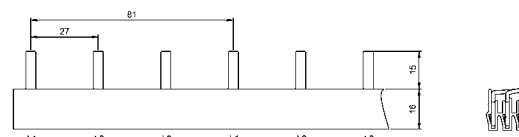
3-phase busbar for 3 pole circuit breakers with auxiliary switch H1



3S10L09A2A00-01	3466/9TE	3	S	10	L	09	17,6	176	As	A1
3S10L48A2A00-01	3466	3	S	10	L	48	17,6	980	As	A1
3S16L09A2A00-01	3470/9TE	3	S	16	L	09	17,6	176	As	A1
3S16L48A2A00-01	3470	3	S	16	L	48	17,6	980	As	A1

3-polige Sammelschiene für 1-polige Sicherungsautomaten mit Hilfsschalter H1

3-phase busbar for 1 pole circuit breakers with auxiliary switch H1

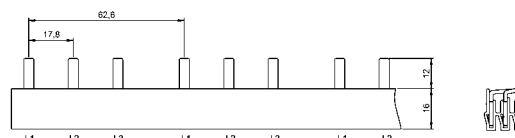


3S10L09S1A00-01	702S	3	S	10	L	09	17,8	231	Cs	A1
3S10L39S1A00-01	712S	3	S	10	L	39	17,8	1045	Cs	A1
3S16L06S1A00-01	702S/16 6TE	3	S	16	L	06	17,8	150	Cs	A1
3S16L09S1A00-01	702S/16	3	S	16	L	09	17,8	231	Cs	A1
3S16L09S6A00-01	702S/16 EK	3	S	16	L	09	17,8	231	Cs	Ek montiert
3S16L12S1A00-01	712S/16 12TE	3	S	16	L	12	17,8	312	Cs	A1
3S16L15S1A00-01	712S/16 15TE	3	S	16	L	15	17,8	394	Cs	A1
3S16L18S1A00-01	712S/16 18TE	3	S	16	L	18	17,8	474	Cs	A1
3S16L21S1A00-01	712S/16 21TE	3	S	16	L	21	17,8	555	Cs	A1
3S16L39S1A00-01	712S/16	3	S	16	L	39	17,8	1045	Cs	A1
3S30L39S1X40-01	712/30	3	S	30	L	39	17,8	1040	Cs	A6

Sammelschienen für Modulkombinationen mit Hilfsschalter H1 (halbe Modulbreite) *Busbars for module combinations with auxiliary switch H1 (half module)*

Artikel-Nr.	Bezeichnung	Anzahl Phasen	Fahnenform Gabel/Steg	Querschnitt (mm ²)	Bauform	Anzahl Fahnen	Modulbreite (mm)	Länge (mm)	Fabrikatszuordnung	Passende Endkappen
Article-No.	Type	No. of phases	Fork/pin type G/S	Cross section (mm ²)	Design	No. of poles	Module width (mm)	Length (mm)	Brand relation	Suitable end covers

3-polige Sammelschiene für 3-polige Sicherungsautomaten mit Hilfsschalter H1 *3-phase busbar for 3 pole circuit breakers with auxiliary switch H1*

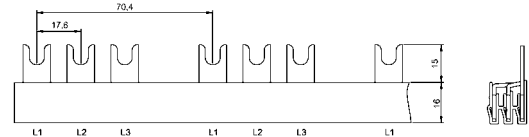


3S10L48S2A00-01	3458	3	S	10	L	48	17,8	990	Cs	A1
3S16L48S2A00-01	3462	3	S	16	L	48	17,8	990	Cs	A1

Sammelschienen für Modulkombinationen mit Hilfsschalter H2 (ganze Modulbreite) *Busbars for module combinations with auxiliary switch H2 (complete module)*

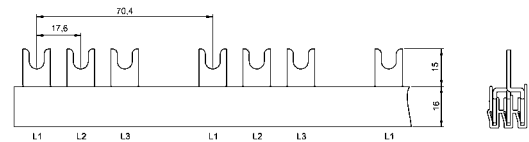
Artikel-Nr.	Bezeichnung	Anzahl Phasen	Fahnenform Gabel/Steg	Querschnitt (mm ²)	Bauform	Anzahl Fahnen	Modulbreite (mm)	Länge (mm)	Fabrikatszuordnung	Passende Endkappen
Article-No.	Type	No. of phases	Fork/pin type G/S	Cross section (mm ²)	Design	No. of poles	Module width (mm)	Length (mm)	Brand relation	Suitable end covers

3-polige Sammelschiene für 3-polige Sicherungsautomaten mit Hilfsschalter H2 *3-phase busbar for 3 pole circuit breakers with auxiliary switch H2*



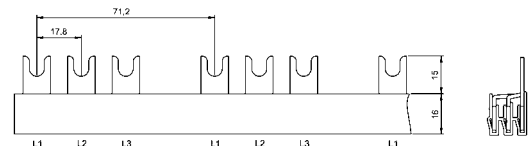
3G10L09A4A00-01	3215	3	G	10	L	09	17,6	193	Ag	A1
3G10L42A4A00-01	3216	3	G	10	L	42	17,6	982	Ag	A1
3G16L09A4A00-01	3218	3	G	16	L	09	17,6	193	Ag	A1
3G16L42A4A00-01	3219	3	G	16	L	42	17,6	982	Ag	A1

3-polige Sammelschiene für 3-polige Sicherungsautomaten mit Hilfsschalter H2 *3-phase busbar for 3 pole circuit breakers with auxiliary switch H2*



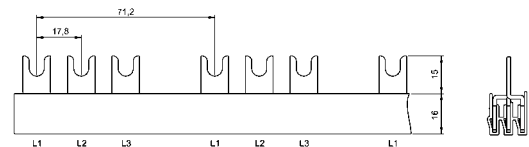
3G10T42A4A00-01	3222	3	G	10	T	42	17,6	982	Ag	A1
3G16T09A4A00-01	3224	3	G	16	T	09	17,6	193	Ag	A1
3G16T42A4A00-01	3225	3	G	16	T	42	17,6	982	Ag	A1

3-polige Sammelschiene für 3-polige Sicherungsautomaten mit Hilfsschalter H2 *3-phase busbar for 3 pole circuit breakers with auxiliary switch H2*



3G10L42S4A00-01	3192	3	G	10	L	42	17,8	982	Cg	A1
3G16L42S4A00-01	3195	3	G	16	L	42	17,8	982	Cg	A1

3-polige Sammelschiene für 3-polige Sicherungsautomaten mit Hilfsschalter H2 *3-phase busbar for 3 pole circuit breakers with auxiliary switch H2*



3G10T42S4A00-01	3198	3	G	10	T	42	17,8	982	Cg	A1
3G16T42S4A00-01	3201	3	G	16	T	42	17,8	982	Cg	A1

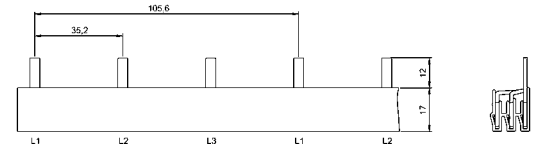
Sammelschienen für Modulkombinationen mit Hilfsschalter H2 (ganze Modulbreite)

Busbars for module combinations with auxiliary switch H2 (complete module)

Artikel-Nr.	Bezeichnung	Anzahl Phasen	Fahnenform Gabel/Steg	Querschnitt (mm ²)	Bauform	Anzahl Fahnen	Modulbreite (mm)	Länge (mm)	Fabrikationszuordnung	Passende Endkappen
Article-No.	Type	No. of phases	Fork/pin type G/S	Cross section (mm ²)	Design	No. of poles	Module width (mm)	Length (mm)	Brand relation	Suitable end covers

3-polige Sammelschiene für 1-polige Sicherungsautomaten mit Hilfsschalter H2

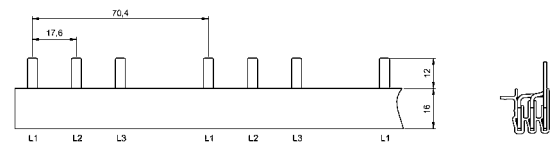
3-phase busbar for 1 pole circuit breakers with auxiliary switch H2



3S10L30A3A00-01	3530	3	S	10	L	30	17,6	1068	As	A1
3S16L30A3A00-01	3531	3	S	16	L	30	17,6	1068	As	A1

3-polige Sammelschiene für 3-polige Sicherungsautomaten mit Hilfsschalter H2

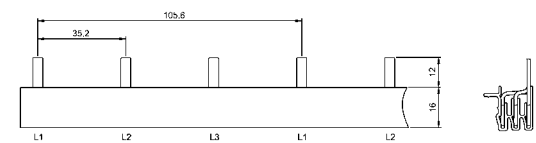
3-phase busbar for 3 pole circuit breakers with auxiliary switch H2



3S10L42A4A00-01	3232	3	S	10	L	42	17,6	982	As	A1
3S16L42A4A00-01	3233	3	S	16	L	42	17,6	982	As	A1

3-polige Sammelschiene für 1-polige Sicherungsautomaten mit Hilfsschalter H2 mit Funktionssteg

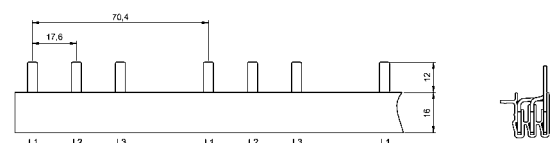
3-phase busbar for 1 pole circuit breakers with auxiliary switch H2 with functional bar



3S10L30A3S00-01	3530 SPM	3	S	10	L	30	17,6	1068	Bs	A5
3S16L30A3S00-01	3531 SPM	3	S	16	L	30	17,6	1068	Bs	A5

3-polige Sammelschiene für 3-polige Sicherungsautomaten mit Hilfsschalter H2 mit Funktionssteg

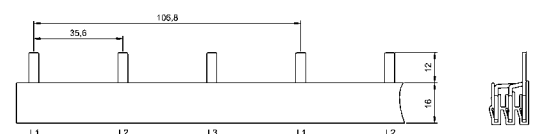
3-phase busbar for 3 pole circuit breakers with auxiliary switch H2 with functional bar



3S10L42A4S00-01	3232SPM	3	S	10	L	42	17,6	982	BS	A5
3S16L42A4S00-01	3233SPM	3	S	16	L	42	17,6	982	BS	A5

3-polige Sammelschiene für 1-polige Sicherungsautomaten mit Hilfsschalter H2

3-phase busbar for 1 pole circuit breakers with auxiliary switch H2

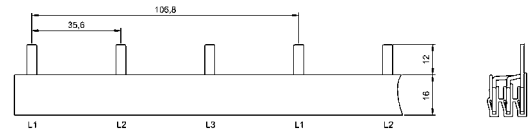


3S10L30S3A00-01	3210	3	S	10	L	30	17,8	1050	Cs	A1
3S16L30S3A00-01	3211	3	S	16	L	30	17,8	1050	Cs	A1

Sammelschienen für Modulkombinationen mit Hilfsschalter H2 (ganze Modulbreite) *Busbars for module combinations with auxiliary switch H2 (complete module)*

Artikel-Nr.	Bezeichnung	Anzahl Phasen	Fahnenform Gabel/Steg	Querschnitt (mm ²)	Bauform	Anzahl Fahnen	Modulbreite (mm)	Länge (mm)	Fabrikatszuordnung	Passende Endkappen
Article-No.	Type	No. of phases	Fork/pin type G/S	Cross section (mm ²)	Design	No. of poles	Module width (mm)	Length (mm)	Brand relation	Suitable end covers

3-polige Sammelschiene für 3-polige Sicherungsautomaten mit Hilfsschalter H2 *3-phase busbar for 3 pole circuit breakers with auxiliary switch H2*

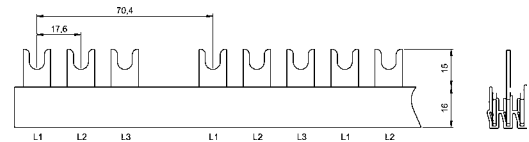


3S10L42S4A00-01	3208	3	S	10	L	42	17,8	982	Cs	A1
3S16L42S4A00-01	3209	3	S	16	L	42	17,8	982	Cs	A1

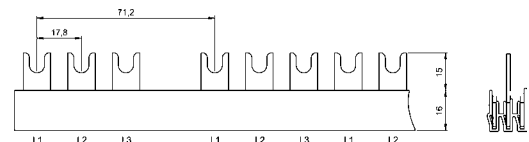
Sonderschienen Special busbars

Artikel-Nr.	Bezeichnung	Anzahl Phasen	Fahnenform Gabel/Steg	Querschnitt (mm ²)	Bauform	Anzahl Fahnen	Modulbreite (mm)	Länge (mm)	Fabrikatzuordnung	Passende Endkappen
Article-No.	Type	No. of phases	Fork/pin type G/S	Cross section (mm ²)	Design	No. of poles	Module width (mm)	Length (mm)	Brand relation	Suitable end covers

3-polige Sammelschiene für FI/LS Kombination, LS mit L1 beginnend 3-phase busbar for RCBO combination, starting with L1

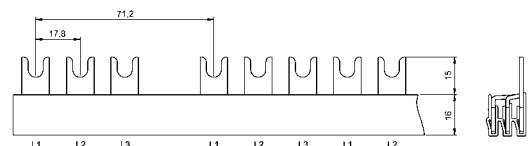


3G10T11A0A0F-01	3364	3	G	10	T	11	17,6	212	Ag	A1
3G10T57A0A0F-01	3367	3	G	10	T	57	17,6	1020	Ag	A1
3G16T11A0A0F-01	3370	3	G	16	T	11	17,6	212	Ag	A1
3G16T57A0A0F-01	3373	3	G	16	T	57	17,6	1020	Ag	A1



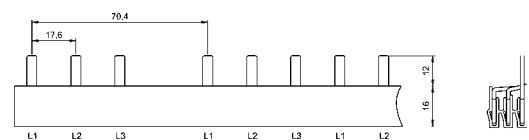
3G10T08S0A0F-01	3365/FI5LS	3	G	10	T	08	17,8	160	Cg	A1
3G10T10S0A0F-01	3365/FI7LS	3	G	10	T	10	17,8	196	Cg	A1
3G10T11S0A0F-01	3365	3	G	10	T	11	17,8	212	Cg	A1
3G10T57S0A0F-01	3368	3	G	10	T	57	17,8	1020	Cg	A1
3G16T11S0A0F-01	3371	3	G	16	T	11	17,8	212	Cg	A1
3G16T57S0A0F-01	3374	3	G	16	T	57	17,8	1020	Cg	A1

3-polige Sammelschiene als Verbinder von Neozed auf LS 3 pole busbar to connect DO elements with MCBs



3G10L11S0A0F-01	3366	3	G	10	L	11	17,8	212	Cg	A1
3G16L11S0A0F-01	3369	3	G	16	L	11	17,8	212	Cg	A1

3-polige Sammelschiene für FI/LS Kombination, LS mit L1 beginnend 3-phase busbar for RCBO combination, with functional bar starting with L1

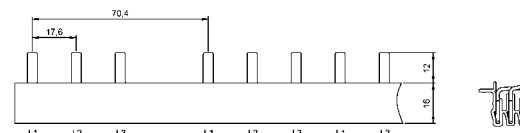


3S10L11A0A0F-01	3364S	3	S	10	L	11	17,6	212	As	A1
3S10L11A5A0F-01	3364S EK	3	S	10	L	11	17,6	212	As	Ek montiert
3S10L57A0A0F-01	3367S	3	S	10	L	57	17,6	1020	As	A1
3S16L11A0A0F-01	3370S	3	S	16	L	11	17,6	212	As	A1
3S16L57A0A0F-01	3373S	3	S	16	L	57	17,6	1020	As	A1

Sonderschienen Special busbars

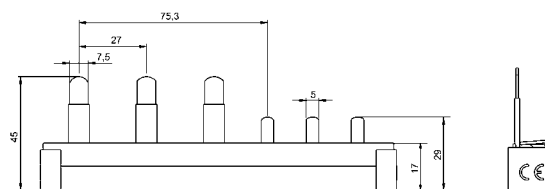
Artikel-Nr.	Bezeichnung	Anzahl Phasen	Fahnenform Gabel/Steg	Querschnitt (mm ²)	Bauform	Anzahl Fahnen	Modulbreite (mm)	Länge (mm)	Fabrikatzuordnung	Passende Endkappen
Article-No.	Type	No. of phases	Fork/pin type G/S	Cross section (mm ²)	Design	No. of poles	Module width (mm)	Length (mm)	Brand relation	Suitable end covers

3-polige Sammelschiene für FI/LS Kombination, LS mit L1 beginnend, mit Funktionssteg 3-phase busbar for RCBO combination, with functional bar, starting with L1



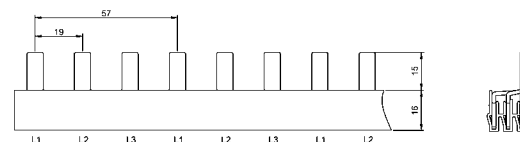
3S10L11A0S0F-01	3364SPM	3	S	10	L	11	17,6	212	Bs	A5
3S10L11A5S0F-01	3364SPM EK	3	S	10	L	11	17,6	212	Bs	Ek mont.
3S10L57A0S0F-01	3367SPM	3	S	10	L	57	17,6	1000	Bs	A5
3S16L11A5S0F-01	3370SPM EK	3	S	16	L	11	17,6	212	Bs	Ek mont.

3-polige Sammelschiene für Neozed/LS Kombination 3-phase busbar for DO elements/ MCB combination



3S10L06A5F00-01	3922/10	3	S	10	L	6	17,6	134	As	Ek mont.
3S16L06A5F00-01	3922	3	S	16	L	6	17,6	134	As	Ek mont.

3-polige Sammelschiene 3-phase busbar



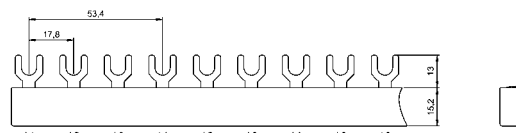
3S16L54X0A0G-01	3794	3	S	16	L	54	19	1022		A1
-----------------	------	---	---	----	---	----	----	------	--	----

Eurovario, kompakte Bauform, nicht sägbar, anreihbar

Eurovario, compact design, not to be cut, addable

Artikel-Nr.	Bezeichnung	Anzahl Phasen	Fahnenform Gabel/Steg	Querschnitt (mm ²)	Bauform	Anzahl Fahnen	Modulbreite (mm)	Länge (mm)	Fabrikatszuordnung
Article-No.	Type	No. of phases	Fork/pin type G/S	Cross section (mm ²)	Design	No. of poles	Module width (mm)	Length (mm)	Brand relation

3-polige Eurovario Sammelschiene 3-phase eurovario busbar



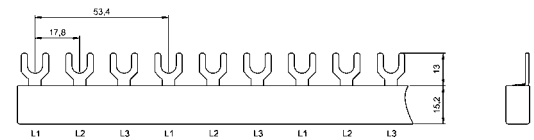
3G10E06S0A00-01	ES 30610	3	G	10	E	06	17,8	104	Cg
3G10E07S0A00-01	ES 30710	3	G	10	E	07	17,8	124	Cg
3G10E08S0A00-01	ES 30810	3	G	10	E	08	17,8	142	Cg
3G10E09S0A00-01	ES 30910	3	G	10	E	09	17,8	159	Cg
3G10E10S0A00-01	ES 31010	3	G	10	E	10	17,8	178	Cg
3G10E11S0A00-01	ES 31110	3	G	10	E	11	17,8	195	Cg
3G10E12S0A00-01	ES 31210	3	G	10	E	12	17,8	212	Cg
3G10E13S0A00-01	ES 31310	3	G	10	E	13	17,8	231	Cg
3G10E14S0A00-01	ES 31410	3	G	10	E	14	17,8	249	Cg
3G10E15S0A00-01	ES 31510	3	G	10	E	15	17,8	267	Cg
3G10E16S0A00-01	ES 31610	3	G	10	E	16	17,8	284	Cg
3G10E17S0A00-01	ES 31710	3	G	10	E	17	17,8	302	Cg
3G10E18S0A00-01	ES 31810	3	G	10	E	18	17,8	320	Cg
3G10E19S0A00-01	ES 31910	3	G	10	E	19	17,8	338	Cg
3G10E20S0A00-01	ES 32010	3	G	10	E	20	17,8	356	Cg
3G10E21S0A00-01	ES 32110	3	G	10	E	21	17,8	373	Cg
3G10E24S0A00-01	ES 32410	3	G	10	E	24	17,8	427	Cg
3G10E26S0A00-01	ES 32610	3	G	10	E	26	17,8	462	Cg
3G16E06S0A00-01	ES 30616	3	G	16	E	06	17,8	104	Cg
3G16E07S0A00-01	ES 30716	3	G	16	E	07	17,8	124	Cg
3G16E08S0A00-01	ES 30816	3	G	16	E	08	17,8	142	Cg
3G16E09S0A00-01	ES 30916	3	G	16	E	09	17,8	159	Cg
3G16E10S0A00-01	ES 31016	3	G	16	E	10	17,8	178	Cg
3G16E11S0A00-01	ES 31116	3	G	16	E	11	17,8	195	Cg
3G16E12S0A00-01	ES 31216	3	G	16	E	12	17,8	212	Cg
3G16E13S0A00-01	ES 31316	3	G	16	E	13	17,8	231	Cg
3G16E14S0A00-01	ES 31416	3	G	16	E	14	17,8	249	Cg
3G16E15S0A00-01	ES 31516	3	G	16	E	15	17,8	267	Cg
3G16E16S0A00-01	ES 31616	3	G	16	E	16	17,8	284	Cg
3G16E17S0A00-01	ES 31716	3	G	16	E	17	17,8	302	Cg
3G16E18S0A00-01	ES 31816	3	G	16	E	18	17,8	320	Cg
3G16E19S0A00-01	ES 31916	3	G	16	E	19	17,8	338	Cg
3G16E20S0A00-01	ES 32016	3	G	16	E	20	17,8	356	Cg
3G16E21S0A00-01	ES 32116	3	G	16	E	21	17,8	373	Cg
3G16E24S0A00-01	ES 32416	3	G	16	E	24	17,8	427	Cg
3G16E26S0A00-01	ES 32616	3	G	16	E	26	17,8	462	Cg

Eurovario, kompakte Bauform, nicht sägbar, anreihbar

Eurovario, compact design, not to be cut, addable

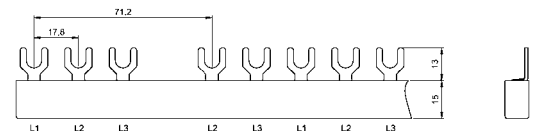
Artikel-Nr.	Bezeichnung	Anzahl Phasen	Fahnenform Gabel/Steg	Querschnitt (mm ²)	Bauform	Anzahl Fahnen	Modulbreite (mm)	Länge (mm)	Fabrikationszuordnung
Article-No.	Type	No. of phases	Fork/pin type G/S	Cross section (mm ²)	Design	No. of poles	Module width (mm)	Length (mm)	Brand relation

3-polige Eurovario Sammelschiene *3-phase eurovario busbar*



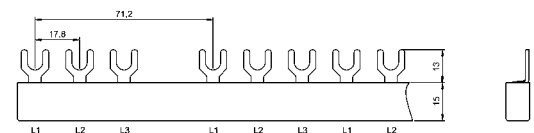
3G25E06S0A00-01	ES 30625	3	G	25	E	06	17,8	104	Cg
3G25E09S0A00-01	ES 30925	3	G	25	E	09	17,8	159	Cg
3G25E12S0A00-01	ES 31225	3	G	25	E	12	17,8	212	Cg
3G25E18S0A00-01	ES 31825	3	G	25	E	18	17,8	320	Cg

3-polige Eurovario Sammelschiene, für FI/LS Kombination *3-phase eurovario busbar, for RCBO combination*



3G10E07S0A0F-01	ES FI4LS	3	G	10	E	07	17,8	142	Cg
3G10E08S0A0F-01	ES FI5LS	3	G	10	E	08	17,8	159	Cg
3G10E09S0A0F-01	ES FI6LS	3	G	10	E	09	17,8	193	Cg
3G10E11S0A0F-01	ES FI8LS	3	G	10	E	11	17,8	212	Cg
3G10E12S0A0F-01	ES FI9LS	3	G	10	E	12	17,8	231	Cg
3G10E13S0A0F-01	ES FI10LS	3	G	10	E	13	17,8	249	Cg
3G16E08S0A0F-01	ES FI5LS16	3	G	16	E	08	17,8	159	Cg
3G16E09S0A0F-01	ES FI6LS16	3	G	16	E	09	17,8	193	Cg
3G16E11S0A0F-01	ES FI8LS16	3	G	16	E	11	17,8	212	Cg
3G16E12S0A0F-01	ES FI9LS16	3	G	16	E	12	17,8	231	Cg
3G16E13S0A0F-01	ES FI10LS16	3	G	16	E	13	17,8	249	Cg

3-polige Eurovario Sammelschiene, für FI/LS Kombination, LS mit L1 beginnend *3-phase eurovario busbar, for RCBO combination, starting with L1*



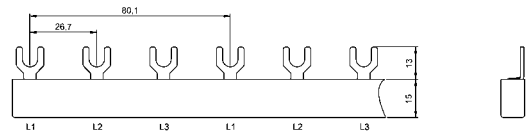
3G10E07S0APF-01	ES FI4LS So	3	G	10	E	7	17,8	142	Cg
3G10E08S0APF-01	ES FI5LS So	3	G	10	E	08	17,8	159	Cg
3G10E09S0APF-01	ES FI6LS So	3	G	10	E	09	17,8	193	Cg
3G10E11S0APF-01	ES FI8LS So	3	G	10	E	11	17,8	212	Cg
3G16E08S0APF-01	ES FI5LS16 So	3	G	16	E	08	17,8	159	Cg
3G16E09S0APF-01	ES FI6LS16 So	3	G	16	E	09	17,8	193	Cg
3G16E11S0APF-01	ES FI8LS16 So	3	G	16	E	11	17,8	212	Cg
3G16E12S0APF-01	ES FI9LS16 So	3	G	16	E	12	17,8	231	Cg
3G16E13S0APF-01	ES FI10LS16 So	3	G	16	E	13	17,8	249	Cg

Eurovario, kompakte Bauform, nicht sägbar, anreihbar

Eurovario, compact design, not to be cut, addable

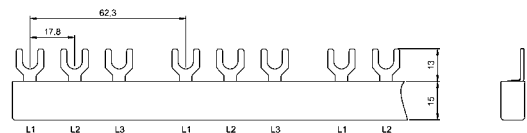
Artikel-Nr.	Bezeichnung	Anzahl Phasen	Fahnenform Gabel/Steg	Querschnitt (mm ²)	Bauform Design	Anzahl Fahnen	Modulbreite (mm) Module width (mm)	Länge (mm)	Fabrikatszuordnung
Article-No.	Type	No. of phases	Fork/pin type G/S	Cross section (mm ²)		No. of poles		Length (mm)	Brand relation

3-polige Eurovario Sammelschiene für 1-polige Sicherungsautomaten mit Hilfsschalter H1 *3-phase eurovario busbar for 1 pole circuit breakers with auxiliary switch H1*



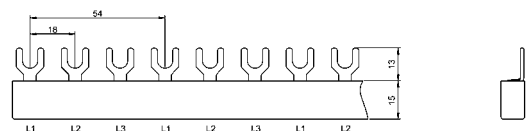
3G10E06S1A00-01	ES G30610H1f	3	G	10	E	06	17,8	159	Cg
3G10E09S1A00-01	ES G30910H1f	3	G	10	E	09	17,8	243	Cg
3G16E06S1A00-01	ES G30616H1f	3	G	16	E	06	17,8	159	Cg
3G16E09S1A00-01	ES G30916H1f	3	G	16	E	09	17,8	243	Cg

3-polige Eurovario Sammelschiene für 3-polige Sicherungsautomaten mit Hilfsschalter H1 *3-phase eurovario busbar for 3 pole circuit breakers with auxiliary switch H1*



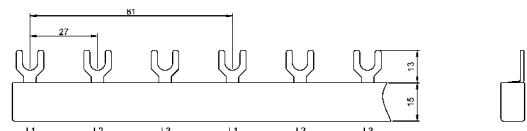
3G10E06S2A00-01	ES G30610H1p	3	G	10	E	06	17,8	115	Cg
3G10E09S2A00-01	ES G30910H1p	3	G	10	E	09	17,8	178	Cg
3G10E12S2A00-01	ES G31210H1p	3	G	10	E	12	17,8	239	Cg
3G16E06S2A00-01	ES G30616H1p	3	G	16	E	06	17,8	115	Cg
3G16E09S2A00-01	ES G30916H1p	3	G	16	E	09	17,8	178	Cg
3G16E12S2A00-01	ES G31216H1p	3	G	16	E	12	17,8	239	Cg

3-polige Eurovario Sammelschiene *3-phase eurovario busbar*



3G10E12K0A00-01	ES 31210/18	3	G	10	E	12	18	212	Kg
-----------------	-------------	---	---	----	---	----	----	-----	----

3-polige Eurovario Sammelschiene für DO Elemente *3-phase eurovario busbar for DO elements*



3G10E06N0A00-01	ES G32706	3	G	10	E	06	27	159	Ng
3G10E08N0A00-01	ES G32708	3	G	10	E	08	27	212	Ng
3G10E09N0A00-01	ES G32709	3	G	10	E	09	27	243	Ng
3G10E12N0A00-01	ES G32712	3	G	10	E	12	27	324	Ng
3G10E15N0A00-01	ES G32715	3	G	10	E	15	27	393	Ng
3G16E06N0A00-01	ES G32706/16	3	G	16	E	06	27	159	Ng
3G16E08N0A00-01	ES G32708/16	3	G	16	E	08	27	212	Ng
3G16E09N0A00-01	ES G32709/16	3	G	16	E	09	27	243	Ng
3G16E12N0A00-01	ES G32712/16	3	G	16	E	12	27	324	Ng
3G16E15N0A00-01	ES G32715/16	3	G	16	E	15	27	393	Ng

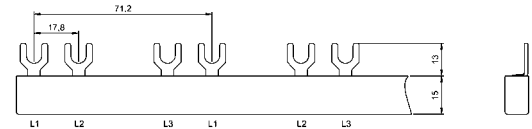
Eurovario, kompakte Bauform, nicht sägbar, anreihbar

Eurovario, compact design, not to be cut, addable

Artikel-Nr.	Bezeichnung	Anzahl Phasen	Fahnenform Gabel/Steg	Querschnitt (mm ²)	Bauform	Anzahl Fahnen	Modulbreite (mm)	Länge (mm)	Fabrikationszuordnung
Article-No.	Type	No. of phases	Fork/pin type G/S	Cross section (mm ²)	Design	No. of poles	Module width (mm)	Length (mm)	Brand relation

3-polige Eurovario Sammelschiene, RCBO

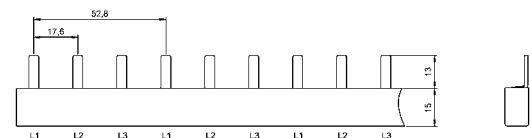
3-phase eurovario busbar, RCBO



3G10E12S4A0V-01	ES 31210 RCBO	3	G	10	E	12	17,8	302	Cg
3G16E12S4A0V-01	ES 31216 RCBO	3	G	16	E	12	17,8	302	Cg

3-polige Eurovario Sammelschiene

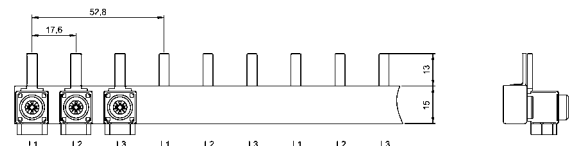
3-phase eurovario busbar



3S10E06A0A00-01	ES S30610 A	3	S	10	E	06	17,6	104	As
3S10E07A0A00-01	ES S30710 A	3	S	10	E	07	17,6	125	As
3S10E08A0A00-01	ES S30810 A	3	S	10	E	08	17,6	143	As
3S10E09A0A00-01	ES S30910 A	3	S	10	E	09	17,6	159	As
3S10E10A0A00-01	ES S31010 A	3	S	10	E	10	17,6	178	As
3S10E11A0A00-01	ES S31110 A	3	S	10	E	11	17,6	195	As
3S10E12A0A00-01	ES S31210 A	3	S	10	E	12	17,6	212	As
3S16E06A0A00-01	ES S30616 A	3	S	16	E	06	17,6	104	As
3S16E07A0A00-01	ES S30716 A	3	S	16	E	07	17,6	125	As
3S16E08A0A00-01	ES S30816 A	3	S	16	E	08	17,6	143	As
3S16E09A0A00-01	ES S30916 A	3	S	16	E	09	17,6	159	As
3S16E10A0A00-01	ES S31016 A	3	S	16	E	10	17,6	178	As
3S16E11A0A00-01	ES S31116 A	3	S	16	E	11	17,6	195	As
3S16E12A0A00-01	ES S31216 A	3	S	16	E	12	17,6	212	As
3S25E06A0A00-01	ES S30625 A	3	S	25	E	06	17,6	104	As
3S25E09A0A00-01	ES S30925 A	3	S	25	E	09	17,6	159	As
3S25E12A0A00-01	ES S31225 A	3	S	25	E	12	17,6	212	As
3S25E18A0A00-01	ES S31825A	3	S	25	E	18	17,6	320	As

3-polige Eurovario Sammelschiene, mit aufgeschweißten Einspeiseklemmen 25 mm²

3-phase eurovario busbar, with welded connection terminals 25 mm²



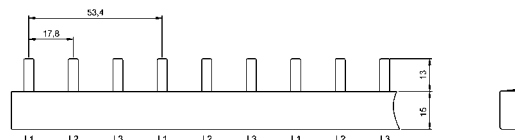
3S10E06A0AT0-01	ES S30610 AK25	3	S	10	E	6	17,6	104	As
3S10E09A0AT0-01	ES S30910 AK25	3	S	10	E	9	17,6	159	As
3S10E12A0AT0-01	ES S31210 AK25	3	S	10	E	12	17,6	212	As

Eurovario, kompakte Bauform, nicht sägbar, anreihbar

Eurovario, compact design, not to be cut, addable

Artikel-Nr.	Bezeichnung	Anzahl Phasen	Fahnenform Gabel/Steg	Querschnitt (mm ²)	Bauform	Anzahl Fahnen	Modulbreite (mm)	Länge (mm)	Fabrikatszuordnung
Article-No.	Type	No. of phases	Fork/pin type G/S	Cross section (mm ²)	Design	No. of poles	Module width (mm)	Length (mm)	Brand relation

3-polige Eurovario Sammelschiene 3-phase eurovario busbar



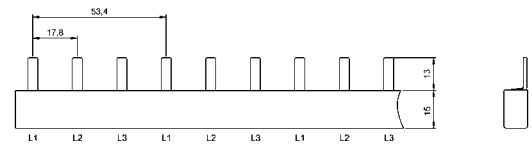
3S10E06S0A00-01	ES S30610	3	S	10	E	06	17,8	104	Cs
3S10E07S0A00-01	ES S30710	3	S	10	E	07	17,8	124	Cs
3S10E08S0A00-01	ES S30810	3	S	10	E	08	17,8	142	Cs
3S10E09S0A00-01	ES S30910	3	S	10	E	09	17,8	159	Cs
3S10E10S0A00-01	ES S31010	3	S	10	E	10	17,8	178	Cs
3S10E11S0A00-01	ES S31110	3	S	10	E	11	17,8	195	Cs
3S10E12S0A00-01	ES S31210	3	S	10	E	12	17,8	212	Cs
3S10E13S0A00-01	ES S31310	3	S	10	E	13	17,8	231	Cs
3S10E14S0A00-01	ES S31410	3	S	10	E	14	17,8	249	Cs
3S10E15S0A00-01	ES S31510	3	S	10	E	15	17,8	267	Cs
3S10E16S0A00-01	ES S31610	3	S	10	E	16	17,8	284	Cs
3S10E17S0A00-01	ES S31710	3	S	10	E	17	17,8	302	Cs
3S10E18S0A00-01	ES S31810	3	S	10	E	18	17,8	320	Cs
3S10E19S0A00-01	ES S31910	3	S	10	E	19	17,8	338	Cs
3S10E20S0A00-01	ES S32010	3	S	10	E	20	17,8	356	Cs
3S10E21S0A00-01	ES S32110	3	S	10	E	21	17,8	373	Cs
3S10E24S0A00-01	ES S32410	3	S	10	E	24	17,8	427	Cs
3S10E26S0A00-01	ES S32610	3	S	10	E	26	17,8	462	Cs
3S16E06S0A00-01	ES S30616	3	S	16	E	06	17,8	104	Cs
3S16E07S0A00-01	ES S30716	3	S	16	E	07	17,8	124	Cs
3S16E08S0A00-01	ES S30816	3	S	16	E	08	17,8	142	Cs
3S16E09S0A00-01	ES S30916	3	S	16	E	09	17,8	159	Cs
3S16E10S0A00-01	ES S31016	3	S	16	E	10	17,8	178	Cs
3S16E11S0A00-01	ES S31116	3	S	16	E	11	17,8	195	Cs
3S16E12S0A00-01	ES S31216	3	S	16	E	12	17,8	212	Cs
3S16E13S0A00-01	ES S31316	3	S	16	E	13	17,8	231	Cs
3S16E14S0A00-01	ES S31416	3	S	16	E	14	17,8	249	Cs
3S16E15S0A00-01	ES S31516	3	S	16	E	15	17,8	267	Cs
3S16E16S0A00-01	ES S31616	3	S	16	E	16	17,8	284	Cs
3S16E17S0A00-01	ES S31716	3	S	16	E	17	17,8	302	Cs
3S16E18S0A00-01	ES S31816	3	S	16	E	18	17,8	320	Cs
3S16E19S0A00-01	ES S31916	3	S	16	E	19	17,8	338	Cs

Eurovario, kompakte Bauform, nicht sägbar, anreihbar

Eurovario, compact design, not to be cut, addable

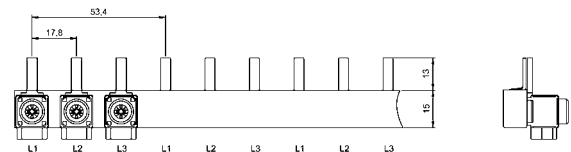
Artikel-Nr.	Bezeichnung	Anzahl Phasen	Fahnenform Gabel/Steg	Querschnitt (mm ²)	Bauform	Anzahl Fahnen	Modulbreite (mm)	Länge (mm)	Fabrikationszuordnung
Article-No.	Type	No. of phases	Fork/pin type G/S	Cross section (mm ²)	Design	No. of poles	Module width (mm)	Length (mm)	Brand relation

3-polige Eurovario Sammelschiene *3-phase eurovario busbar*



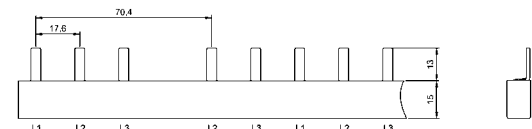
3S16E20S0A00-01	ES S32016	3	S	16	E	20	17,8	356	Cs
3S16E21S0A00-01	ES S32116	3	S	16	E	21	17,8	373	Cs
3S16E24S0A00-01	ES S32416	3	S	16	E	24	17,8	427	Cs
3S16E26S0A00-01	ES S32616	3	S	16	E	26	17,8	462	Cs
3S25E06S0A00-01	ES S30625	3	S	25	E	06	17,8	104	Cs
3S25E09S0A00-01	ES S30925	3	S	25	E	09	17,8	159	Cs
3S25E12S0A00-01	ES S31225	3	S	25	E	12	17,8	212	Cs
3S25E18S0A00-01	ES S31825	3	S	25	E	18	17,8	320	Cs

3-polige Eurovario Sammelschiene, mit aufgeschweißten Einspeiseklemmen 25 mm² *3-phase eurovario busbar, with welded connection terminals 25 mm²*



3S10E06S0AT0-01	ES S30610 K25	3	S	10	E	06	17,8	104	Cs
3S10E09S0AT0-01	ES S30910 K25	3	S	10	E	09	17,8	159	Cs
3S10E12S0AT0-01	ES S31210 K25	3	S	10	E	12	17,8	212	Cs

3-polige Eurovario Sammelschiene, für FI/LS Kombination *3-phase eurovario busbar, for RCBO combination*



3S10E08A0A0F-01	ES SF15LS A	3	S	10	E	08	17,6	159	As
3S10E11A0A0F-01	ES SF18LS A	3	S	10	E	11	17,6	212	As
3S10E12A0A0F-01	ES SF19LS A	3	S	10	E	12	17,6	231	As
3S10E13A0A0F-01	ES SF110LS A	3	S	10	E	13	17,6	249	As
3S16E08A0A0F-01	ES SF15LS16 A	3	S	16	E	08	17,6	159	As
3S16E11A0A0F-01	ES SF18LS16 A	3	S	16	E	11	17,6	212	As
3S16E12A0A0F-01	ES SF19LS16 A	3	S	16	E	12	17,6	231	As
3S16E13A0A0F-01	ES SF110LS16 A	3	S	16	E	13	17,6	249	As

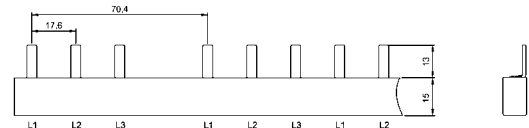
Eurovario, kompakte Bauform, nicht sägbar, anreihbar

Eurovario, compact design, not to be cut, addable

Artikel-Nr.	Bezeichnung	Anzahl Phasen	Fahnenform Gabel/Steg	Querschnitt (mm ²)	Bauform Design	Anzahl Fahnen	Modulbreite (mm) Module width (mm)	Länge (mm)	Fabrikatszuordnung
Article-No.	Type	No. of phases	Fork/pin type G/S	Cross section (mm ²)		No. of poles		Length (mm)	Brand relation

3-polige Eurovario Sammelschiene, für FI/LS Kombination, LS beginnend mit L1

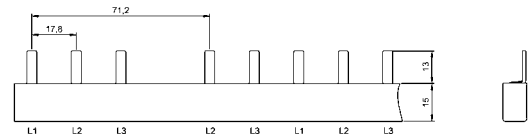
3-phase eurovario busbar, for RCBO combination, LS starting with L1



3S10E08A0APF-01	ES SFI5LS A So	3	S	10	E	08	17,6	159	As
3S10E11A0APF-01	ES SFI8LS A So	3	S	10	E	11	17,6	212	As
3S16E08A0APF-01	ES SFI5LS16 A So	3	S	16	E	08	17,6	159	As
3S16E11A0APF-01	ES SFI8LS16 A So	3	S	16	E	11	17,6	212	As

3-polige Eurovario Sammelschiene, für FI/LS Kombination

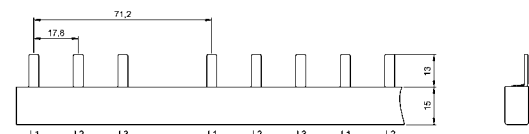
3-phase eurovario busbar, for RCBO combination



3S10E08S0A0F-01	ES SFI5LS	3	S	10	E	08	17,8	159	Cs
3S10E09S0A0F-01	ES SFI6LS	3	S	10	E	09	17,8	178	Cs
3S10E11S0A0F-01	ES SFI8LS	3	S	10	E	11	17,8	212	Cs
3S10E12S0A0F-01	ES SFI9LS	3	S	10	E	12	17,8	231	Cs
3S10E13S0A0F-01	ES SFI10LS	3	S	10	E	13	17,8	249	Cs
3S16E08S0A0F-01	ES SFI5LS16	3	S	16	E	08	17,8	159	Cs
3S16E11S0A0F-01	ES SFI8LS16	3	S	16	E	11	17,8	212	Cs
3S16E12S0A0F-01	ES SFI9LS16	3	S	16	E	12	17,8	231	Cs
3S16E13S0A0F-01	ES SFI10LS16	3	S	16	E	13	17,8	249	Cs

3-polige Eurovario Sammelschiene, für FI/LS Kombination, LS mit L1 beginnend

3-phase eurovario busbar, for RCBO combination, LS starting with L1



3S10E08S0APF-01	ES SFI5LS So	3	S	10	E	08	17,8	159	Cs
3S10E09S0APF-01	ES SFI6LS So	3	S	10	E	09	17,8	178	Cs
3S10E11S0APF-01	ES SFI8LS So	3	S	10	E	11	17,8	212	Cs
3S10E12S0APF-01	ES SFI9LS So	3	S	10	E	12	17,8	231	Cs
3S10E13S0APF-01	ES SFI10LS So	3	S	10	E	13	17,8	249	Cs
3S16E08S0APF-01	ES SFI5LS16 So	3	S	16	E	08	17,8	159	Cs
3S16E11S0APF-01	ES SFI8LS16 So	3	S	16	E	11	17,8	212	Cs

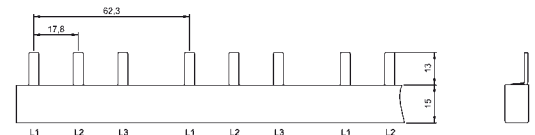
Eurovario, kompakte Bauform, nicht sägbar, anreihbar

Eurovario, compact design, not to be cut, addable

Artikel-Nr.	Bezeichnung	Anzahl Phasen	Fahnenform Gabel/Steg	Querschnitt (mm ²)	Bauform	Anzahl Fahnen	Modulbreite (mm)	Länge (mm)	Fabrikationszuordnung
Article-No.	Type	No. of phases	Fork/pin type G/S	Cross section (mm ²)	Design	No. of poles	Module width (mm)	Length (mm)	Brand relation

3-polige Eurovario Sammelschiene für 3-polige Sicherungsautomaten mit Hilfsschalter H1

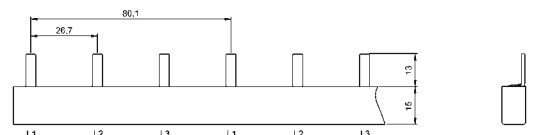
3-phase eurovario busbar for 3 pole circuit breakers with auxiliary switch H1



3S10E06S2A00-01	ES S30610H1p	3	S	10	E	06	17,8	115	Cs
3S10E09S2A00-01	ES S30910H1p	3	S	10	E	09	17,8	178	Cs
3S16E06S2A00-01	ES S30616H1p	3	S	16	E	06	17,8	115	Cs
3S16E09S2A00-01	ES S30916H1p	3	S	16	E	09	17,8	178	Cs
3S16E12S2A00-01	ES S31216H1p	3	S	16	E	12	17,8	240	Cs

3-polige Eurovario Sammelschiene für 1-polige Sicherungsautomaten mit Hilfsschalter H1

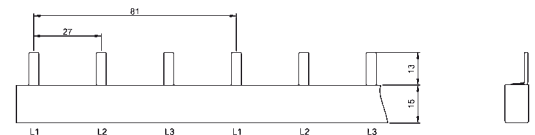
3-phase eurovario busbar for 1 pole circuit breakers with auxiliary switch H1



3S10E06S1A00-01	ES S30610H1f	3	S	10	E	06	17,8	159	Cs
3S10E09S1A00-01	ES S30910H1f	3	S	10	E	09	17,8	243	Cs
3S16E06S1A00-01	ES S30616H1f	3	S	16	E	06	17,8	159	Cs
3S16E09S1A00-01	ES S30916H1f	3	S	16	E	09	17,8	243	Cs

3-polige Eurovario Sammelschiene für DO Elemente

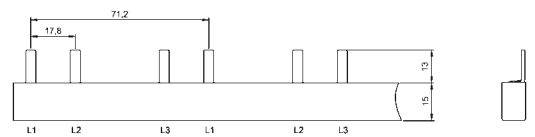
3-phase eurovario busbar for DO elements



3S10E06N0A00-01	ES S32706	3	S	10	E	06	27	159	Ns
3S10E08N0A00-01	ES S32708	3	S	10	E	08	27	212	Ns
3S10E09N0A00-01	ES S32709	3	S	10	E	09	27	243	Ns
3S10E12N0A00-01	ES S32712	3	S	10	E	12	27	324	Ns
3S16E06N0A00-01	ES S32706/16	3	S	16	E	06	27	159	Ns
3S16E08N0A00-01	ES S32708/16	3	S	16	E	08	27	212	Ns
3S16E09N0A00-01	ES S32709/16	3	S	16	E	09	27	243	Ns
3S16E12N0A00-01	ES S32712/16	3	S	16	E	12	27	324	Ns

3-polige Eurovario Sammelschiene, RCBO

3-phase eurovario busbar, RCBO



3S10E12S4A0V-01	ESS 31210 RCBO	3	S	10	E	12	17,8	302	Cs
3S16E12S4A0V-01	ESS 31216 RCBO	3	S	16	E	12	17,8	302	Cs