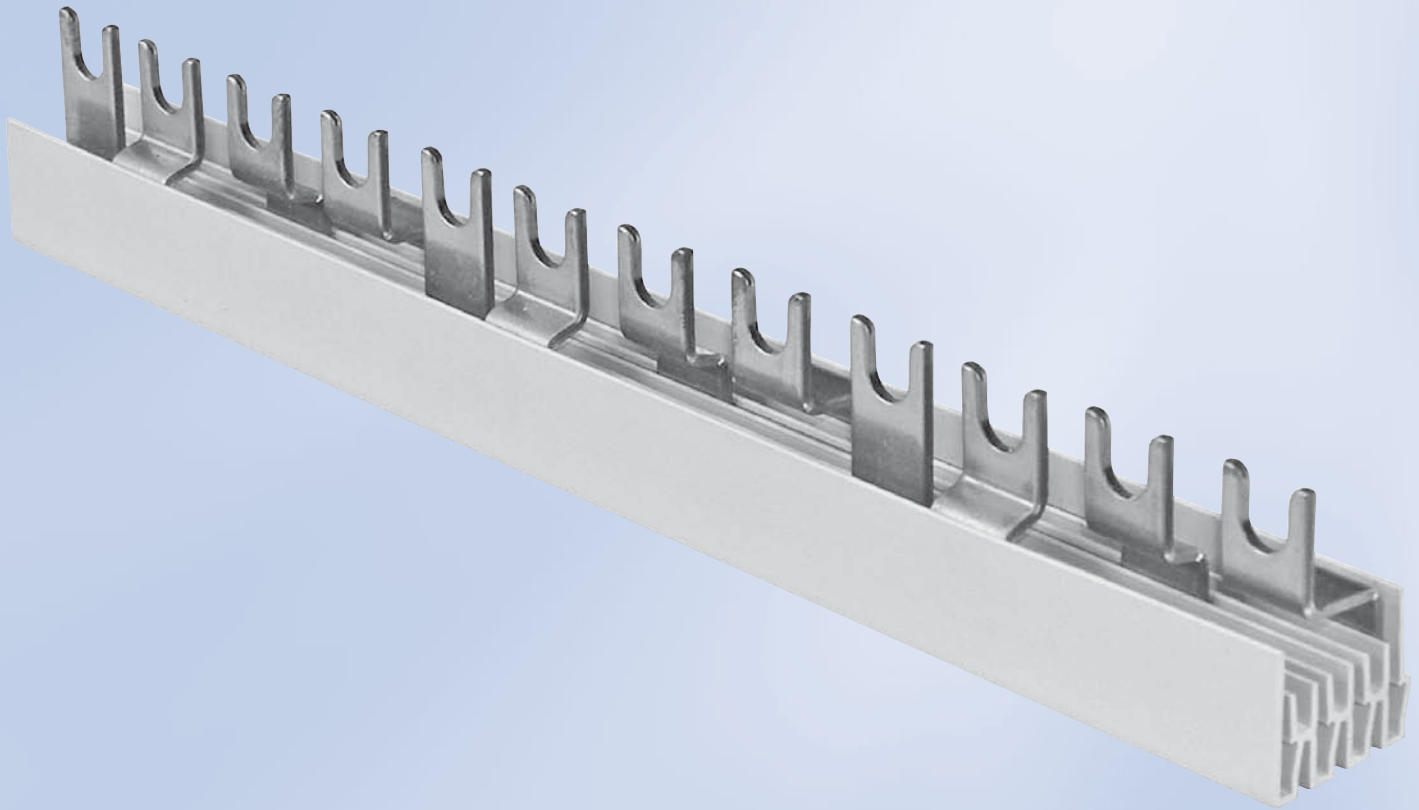


4-polige Sammelschienen *4-phase busbars*

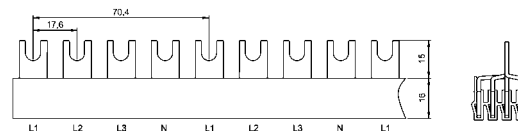


Standardschienen (mit gleichem Schrittabstand)

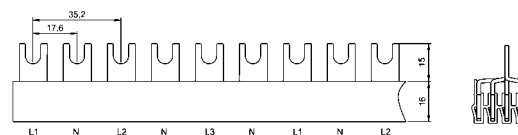
Standard busbars (with equal pitch)

Artikel-Nr.	Bezeichnung	Anzahl Phasen	Fahnenform Gabel/Steg	Querschnitt (mm ²)	Bauform	Anzahl Fahnen	Modulbreite (mm)	Länge (mm)	Fabrikationszuordnung	Passende Endkappen
Article-No.	Type	No. of phases	Fork/pin type G/S	Cross section (mm ²)	Design	No. of poles	Module width (mm)	Length (mm)	Brand relation	Suitable end covers

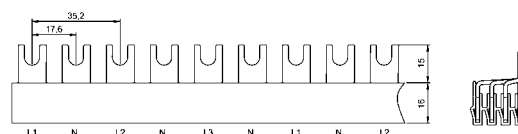
4-polige Sammelschiene 4-phase busbar



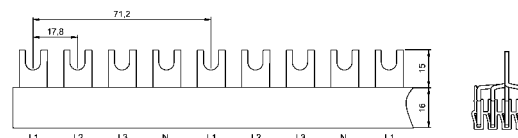
4G10T12A0A00-01	3030	4	G	10	T	12	17,6	212	Ag	A2
4G10T56A0A00-01	3033	4	G	10	T	56	17,6	1000	Ag	A2
4G16T12A0A00-01	3035	4	G	16	T	12	17,6	212	Ag	A2
4G16T56A0A00-01	3036	4	G	16	T	56	17,6	1000	Ag	A2



4G10T12A0A0N-01	3560	4	G	10	T	12	17,6	212	Ag	A2
4G10T54A0A0N-01	3564	4	G	10	T	54	17,6	1000	Ag	A2
4G16T12A0A0N-01	3568	4	G	16	T	12	17,6	212	Ag	A2
4G16T54A0A0N-01	3572	4	G	16	T	54	17,6	1000	Ag	A2



4G10L12A0A0N-01	3576	4	G	10	L	12	17,6	212	Ag	A2
4G10L54A0A0N-01	3580	4	G	10	L	54	17,6	1000	Ag	A2
4G16L12A0A0N-01	3584	4	G	16	L	12	17,6	212	Ag	A2
4G16L54A0A0N-01	3588	4	G	16	L	54	17,6	1000	Ag	A2



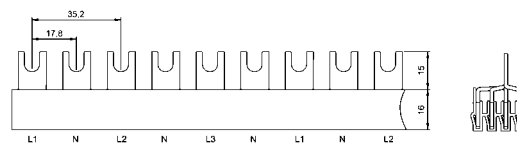
4G10T12S0A00-01	706T	4	G	10	T	12	17,8	212	Cg	A2
4G10T16S0A00-01	716T 16TE	4	G	10	T	16	17,8	285	Cg	A2
4G10T56S0A00-01	716T	4	G	10	T	56	17,8	1000	Cg	A2
4G16T12S0A00-01	706T/16	4	G	16	T	12	17,8	212	Cg	A2
4G16T56S0A00-01	716T/16	4	G	16	T	56	17,8	1000	Cg	A2

Standardschienen (mit gleichem Schrittabstand)

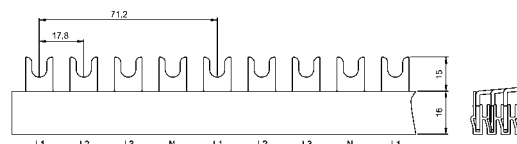
Standard busbars (with equal pitch)

Artikel-Nr.	Bezeichnung	Anzahl Phasen	Fahnenform Gabel/Steg	Querschnitt (mm ²)	Bauform	Anzahl Fahnen	Modulbreite (mm)	Länge (mm)	Fabrikatszuordnung	Passende Endkappen
Article-No.	Type	No. of phases	Fork/pin type G/S	Cross section (mm ²)	Design	No. of poles	Module width (mm)	Length (mm)	Brand relation	Suitable end covers

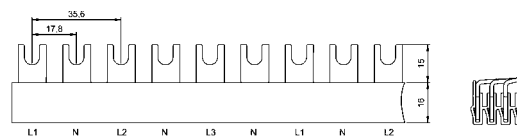
4-polige Sammelschiene 4-phase busbar



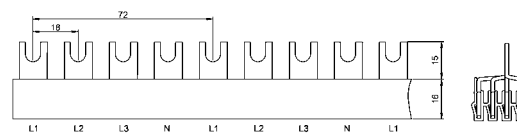
4G10T12S0A0N-01	3239	4	G	10	T	12	17,8	212	Cg	A2
4G10T54S0A0N-01	3240	4	G	10	T	54	17,8	1000	Cg	A2
4G16T12S0A0N-01	3242	4	G	16	T	12	17,8	212	Cg	A2
4G16T54S0A0N-01	3243	4	G	16	T	54	17,8	1000	Cg	A2



4G10L12S0A00-01	706	4	G	10	L	12	17,8	212	Cg	A2
4G10L56S0A00-01	716	4	G	10	L	56	17,8	1000	Cg	A2
4G16L12S0A00-01	706/16	4	G	16	L	12	17,8	212	Cg	A2
4G16L56S0A00-01	716/16	4	G	16	L	56	17,8	1000	Cg	A2

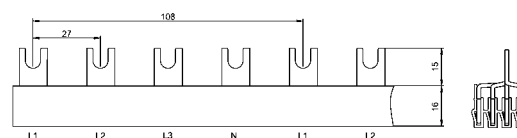


4G10L12S0A0N-01	3474	4	G	10	L	12	17,8	212	Cg	A2
4G10L54S0A0N-01	3478	4	G	10	L	54	17,8	1000	Cg	A2
4G16L12S0A0N-01	3486	4	G	16	L	12	17,8	212	Cg	A2
4G16L54S0A0N-01	3482	4	G	16	L	54	17,8	1000	Cg	A2



4G10T56K0A00-01	3320/10	4	G	10	T	56	18	1020	Kg	A2
4G16T56K0A00-01	3320	4	G	16	T	56	18	1020	Kg	A2

4-polige Sammelschiene für DO Elemente 4-phase busbar for DO Elements



4G10T40N0A00-01	3870/10	4	G	10	T	40	27	1070	Ng	A2
4G16T40N0A00-01	3870	4	G	16	T	40	27	1070	Ng	A2

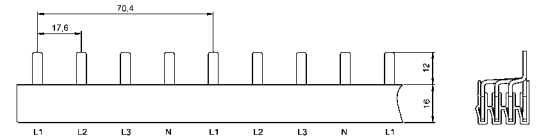
Standardschienen (mit gleichem Schrittabstand)

Standard busbars (with equal pitch)

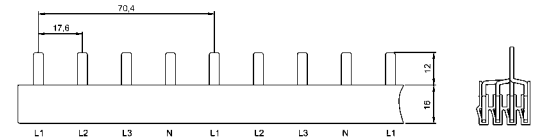
Artikel-Nr.	Bezeichnung	Anzahl Phasen	Fahnenform Gabel/Steg	Querschnitt (mm ²)	Bauform	Anzahl Fahnen	Modulbreite (mm)	Länge (mm)	Fabrikatzuordnung	Passende Endkappen
Article-No.	Type	No. of phases	Fork/pin type G/S	Cross section (mm ²)	Design	No. of poles	Module width (mm)	Length (mm)	Brand relation	Suitable end covers

4-polige Sammelschiene

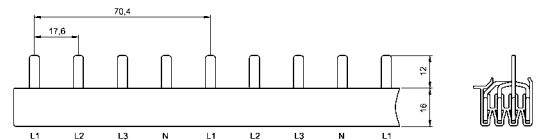
4-phase busbar



4S10L12A0A00-01	3544	4	S	10	L	12	17,6	212	As	A2
4S10L56A0A00-01	3546	4	S	10	L	56	17,6	1000	As	A2
4S16L12A0A00-01	3548	4	S	16	L	12	17,6	212	As	A2
4S16L56A0A00-01	3550	4	S	16	L	56	17,6	1000	As	A2



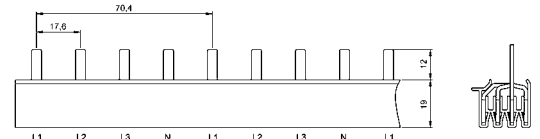
4S10T12A0A00-01	3900	4	S	10	T	12	17,6	210	As	A2
4S10T56A0A00-01	3901	4	S	10	T	56	17,6	990	As	A2
4S16T12A0A00-01	3902	4	S	16	T	12	17,6	210	As	A2
4S16T56A0A00-01	3903	4	S	16	T	56	17,6	990	As	A2



4-polige Sammelschiene, mit Funktionssteg

4-phase busbar, with functional bar

4S10T12A0S00-01	3900SPM	4	S	10	T	12	17,6	212	Bs	A10
4S10T60A0S00-01	3901SPM	4	S	10	T	60	17,6	1000	Bs	A10
4S16T12A0S00-01	3902SPM	4	S	16	T	12	17,6	212	Bs	A10
4S16T60A0S00-01	3903SPM	4	S	16	T	60	17,6	1000	Bs	A10



4-polige Sammelschiene abbrechbar, mit Funktionssteg

4-phase busbar, breakable, with functional bar

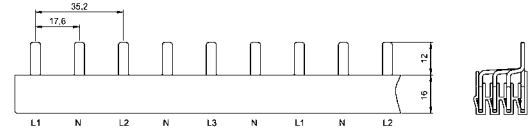
4S10T12A0S0A-01	3900SPM A	4	S	10	T	12	17,6	212	Bs	A10
4S10T60A0S0A-01	3901SPM A	4	S	10	T	60	17,6	1000	Bs	A10
4S16T12A0S0A-01	3902SPM A	4	S	16	T	12	17,6	212	Bs	A10
4S16T60A0S0A-01	3903SPM A	4	S	16	T	60	17,6	1000	Bs	A10

Standardschienen (mit gleichem Schrittabstand)

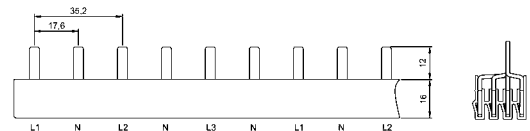
Standard busbars (with equal pitch)

Artikel-Nr.	Bezeichnung	Anzahl Phasen	Fahnenform Gabel/Steg	Querschnitt (mm ²)	Bauform	Anzahl Fahnen	Modulbreite (mm)	Länge (mm)	Fabrikationszuordnung	Passende Endkappen
Article-No.	Type	No. of phases	Fork/pin type G/S	Cross section (mm ²)	Design	No. of poles	Module width (mm)	Length (mm)	Brand relation	Suitable end covers

4-polige Sammelschiene 4-phase busbar

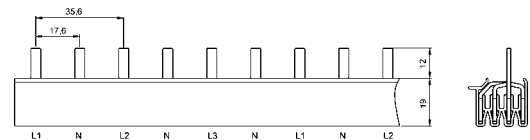


4S10L12A0A0N-01	3592	4	S	10	L	12	17,6	212	As	A2
4S10L54A0A0N-01	3596	4	S	10	L	54	17,6	1000	As	A2
4S16L12A0A0N-01	3600	4	S	16	L	12	17,6	212	As	A2
4S16L54A0A0N-01	3604	4	S	16	L	54	17,6	1000	As	A2



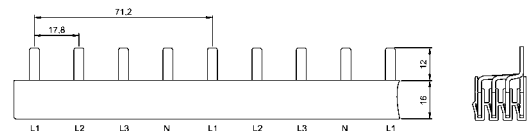
4S10T12A0A0N-01	3904	4	S	10	T	12	17,6	212	As	A2
4S10T54A0A0N-01	3905	4	S	10	T	54	17,6	1000	As	A2
4S16T12A0A0N-01	3906	4	S	16	T	12	17,6	212	As	A2
4S16T54A0A0N-01	3907	4	S	16	T	54	17,6	1000	As	A2

4-polige Sammelschiene, mit Funktionssteg 4-phase busbar, with functional bar



4S10T12A0S0N-01	3904SPM	4	S	10	T	12	17,6	212	Bs	A10
4S10T54A0S0N-01	3905SPM	4	S	10	T	54	17,6	1000	Bs	A10
4S16T12A0S0N-01	3906SPM	4	S	16	T	12	17,6	212	Bs	A10
4S16T54A0S0N-01	3907SPM	4	S	16	T	54	17,6	1000	Bs	A10

4-polige Sammelschiene 4-phase busbar



4S10L12S0A00-01	706S	4	S	10	L	12	17,8	212	Cs	A2
4S10L12S5A00-01	706S EK	4	S	10	L	12	17,8	212	Cs	EK montiert
4S10L18S0A00-01	716S 18TE	4	S	10	L	18	17,8	304	Cs	A2
4S10L24S0A00-01	716S 24TE	4	S	10	L	24	17,8	425	Cs	A2
4S10L56S0A00-01	716S	4	S	10	L	56	17,8	1000	Cs	A2
4S16L12S0A00-01	706S/16	4	S	16	L	12	17,8	212	Cs	A2
4S16L56S0A00-01	716S/16	4	S	16	L	56	17,8	1000	Cs	A2

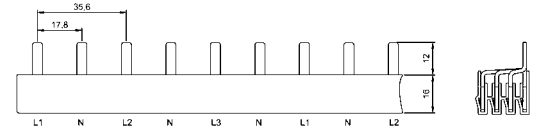
Standardschienen (mit gleichem Schrittabstand)

Standard busbars (with equal pitch)

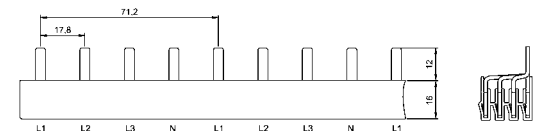
Artikel-Nr.	Bezeichnung	Anzahl Phasen	Fahnenform Gabel/Steg	Querschnitt (mm ²)	Bauform	Anzahl Fahnen	Modulbreite (mm)	Länge (mm)	Fabrikatzuordnung	Passende Endkappen
Article-No.	Type	No. of phases	Fork/pin type G/S	Cross section (mm ²)	Design	No. of poles	Module width (mm)	Length (mm)	Brand relation	Suitable end covers

4-polige Sammelschiene

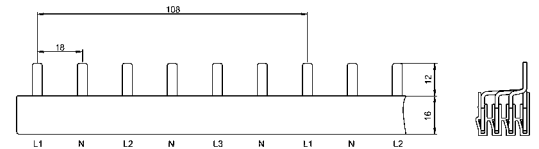
4-phase busbar



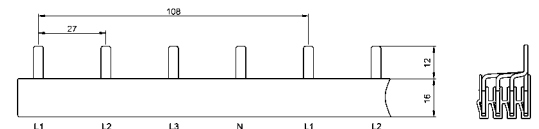
4S10L12S0A0N-01	3490	4	S	10	L	12	17,8	212	Cs	A2
4S10L54S0A0N-01	3494	4	S	10	L	54	17,8	1000	Cs	A2
4S16L12S0A0N-01	3498	4	S	16	L	12	17,8	212	Cs	A2
4S16L54S0A0N-01	3502	4	S	16	L	54	17,8	1000	Cs	A2



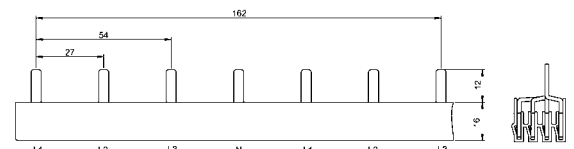
4S10L12K0A00-01	3496	4	S	10	L	12	18	212	Ks	A2
4S10L56K0A00-01	3497	4	S	10	L	56	18	1000	Ks	A2
4S16L12K0A00-01	3496/16	4	S	16	L	12	18	212	Ks	A2
4S16L56K0A00-01	3497/16	4	S	16	L	56	18	1000	Ks	A2



4S10L54K0A0N-01	3495	4	S	10	L	54	18	1000	Ks	A2
4S16L54K0A0N-01	3496	4	S	16	L	54	18	1000	Ks	A2



4S16L12N0A00-01	3875	4	S	16	L	12	27	315	Ns	A2
4S16L36N0A00-01	3876	4	S	16	L	36	27	1000	Ns	A2



4-polige Sammelschiene für DO Elemente

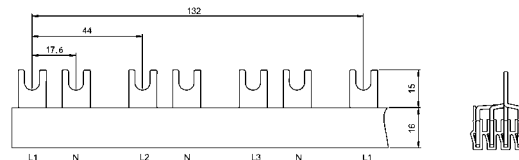
4-phase busbar for DO Elements

4S10T40N0A00-01	3870S/10	4	S	10	T	40	27	1080	Ns	A2
4S16T40N0A00-01	3870S	4	S	16	T	40	27	1080	Ns	A2

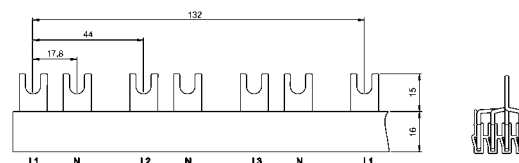
Sammelschienen für Modulkombinationen mit Hilfsschalter H1 (halbe Modulbreite) *Busbars for module combinations with auxiliary switch H1 (half module)*

Artikel-Nr.	Bezeichnung	Anzahl Phasen	Fahnenform Gabel/Steg	Querschnitt (mm ²)	Bauform	Anzahl Fahnen	Modulbreite (mm)	Länge (mm)	Fabrikationszuordnung	Passende Endkappen
Article-No.	Type	No. of phases	Fork/pin type G/S	Cross section (mm ²)	Design	No. of poles	Module width (mm)	Length (mm)	Brand relation	Suitable end covers

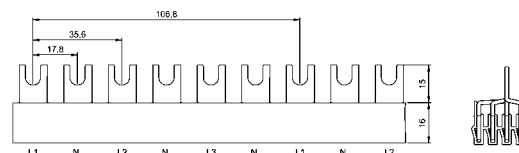
4-polige Sammelschiene, mit Hilfsschalter H1 *4-phase busbar, with auxiliary switch H1*



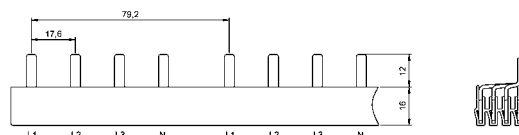
4G10T48A1A0N-01	3885	4	G	10	T	48	17,6	1064	Ag	A2
4G16T48A1A0N-01	3886	4	G	16	T	48	17,6	1064	Ag	A2



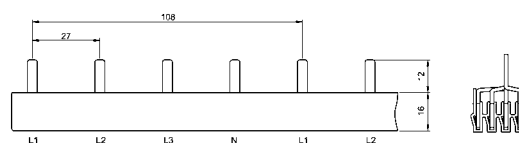
4G10T48S1A0N-01	3880	4	G	10	T	48	17,8	1064	Cg	A2
4G16T48S1A0N-01	3881	4	G	16	T	48	17,8	1064	Cg	A2



4G10T40S1A00-01	3870/10	4	G	10	T	40	17,8	1070	Cg	A2
-----------------	---------	---	---	----	---	----	------	------	----	----

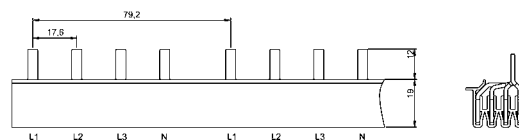


4S10L52A2A00-01	3872	4	S	10	L	52	17,6	1020	As	A2
4S16L52A2A00-01	3874	4	S	16	L	52	17,6	1020	As	A2



4S16T20S1A00-01	3114	4	S	16	T	20	17,8	530	Cs	A2
4S16T42S1A00-01	3115	4	S	16	T	42	17,8	1120	Cs	A2

4-polige Sammelschiene, mit Funktionssteg *4-phase busbar, with functional bar*

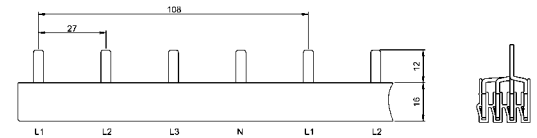


4S10L52A2S00-01	3872SPM	4	S	10	L	52	17,6	1020	Bs	A10
4S16L52A2S00-01	3874SPM	4	S	16	L	52	17,6	1020	Bs	A10

Sammelschienen für Modulkombinationen mit Hilfsschalter H1 (halbe Modulbreite) *Busbars for module combinations with auxiliary switch H1 (half module)*

Artikel-Nr.	Bezeichnung	Anzahl Phasen	Fahnenform Gabel/Steg	Querschnitt (mm ²)	Bauform	Anzahl Fahnen	Modulbreite (mm)	Länge (mm)	Fabrikatzuordnung	Passende Endkappen
Article-No.	Type	No. of phases	Fork/pin type G/S	Cross section (mm ²)	Design	No. of poles	Module width (mm)	Length (mm)	Brand relation	Suitable end covers

4-polige Sammelschiene, mit Hilfsschalter H1 *4-phase busbar, with auxiliary switch H1*



4S10T40S1A00-01	3870S/10	4	S	10	T	40	17,8	1070	Cs	A2
4S16T40S1A00-01	3870S	4	S	16	T	40	17,8	1070	Cs	A2
4S30T40S1X0G-01	3870S/30	4	S	30	T	40	17,8	1070	Cs	A6

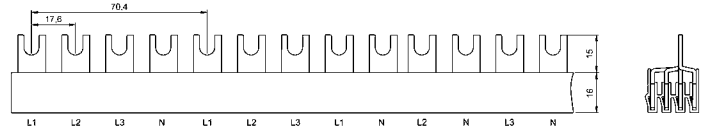
Sonderschienen

Special busbars

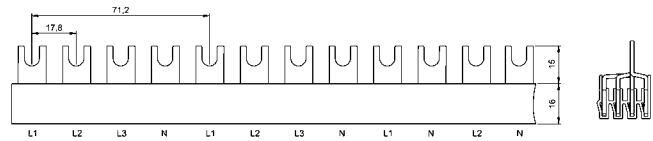
Artikel-Nr.	Bezeichnung	Anzahl Phasen	Fahnenform Gabel/Steg	Querschnitt (mm ²)	Bauform	Anzahl Fahnen	Modulbreite (mm)	Länge (mm)	Fabrikationszuordnung	Passende Endkappen
Article-No.	Type	No. of phases	Fork/pin type G/S	Cross section (mm ²)	Design	No. of poles	Module width (mm)	Length (mm)	Brand relation	Suitable end covers

4-polige Sammelschiene, sich ändernde Phasenfolge

4-phase busbar, changing phase sequence



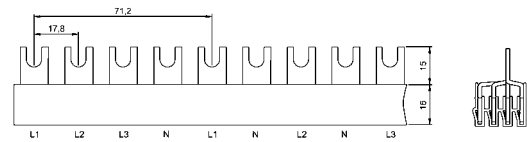
4G10T13A0A0V-01	3379	4	G	10	T	13	17,6	230	Ag	A2
-----------------	------	---	---	----	---	----	------	-----	----	----



4G16T12S0A0V-01	3768	4	G	16	T	12	17,8	212	Cg	A2
-----------------	------	---	---	----	---	----	------	-----	----	----

4-polige Sammelschiene für FI/LS Kombination

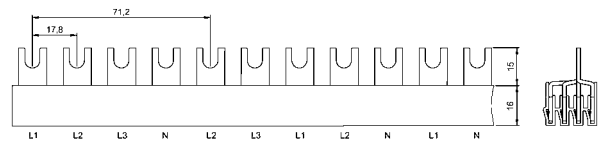
4-phase busbar for RCBO combination



4G10T12S0A0F-01	3785/10	4	G	10	T	12	17,8	212	Cg	A2
4G10T58S0A0F-01	3774/10	4	G	10	T	58	17,8	1035	Cg	A2
4G16T12S0A0F-01	3785	4	G	16	T	12	17,8	212	Cg	A2
4G16T58S0A0F-01	3774	4	G	16	T	58	17,8	1035	Cg	A2

4-polige Sammelschiene, sich ändernde Phasenfolge

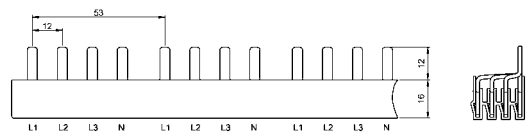
4-phase busbar, changing phase sequence



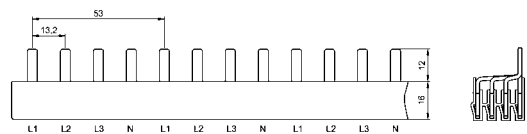
4G10T13S0A0V-01	3778	4	G	10	T	13	17,8	235	Cg	A2
4G10T15S0A0V-01	3781	4	G	10	T	15	17,8	265	Cg	A2

4-polige Sammelschiene

4-phase busbar



4S16L16X0A0V-01	3439	4	S	16	L	16	12	192		A2
4S16L80X0A0V-01	3436	4	S	16	L	80	12	960		A2



4S16L80X0AS0-01	3376	4	S	16	L	80	13,2	1056		A2
-----------------	------	---	---	----	---	----	------	------	--	----

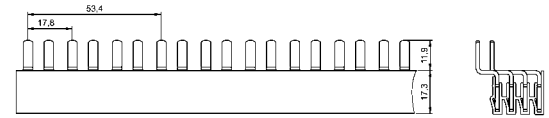
Sonderschienen

Special busbars

Artikel-Nr.	Bezeichnung	Anzahl Phasen	Fahnenform Gabel/Steg	Querschnitt (mm ²)	Bauform	Anzahl Fahnen	Modulbreite (mm)	Länge (mm)	Fabrikationszuordnung	Passende Endkappen
Article-No.	Type	No. of phases	Fork/pin type G/S	Cross section (mm ²)	Design	No. of poles	Module width (mm)	Length (mm)	Brand relation	Suitable end covers

4-polige Sammelschiene für 1 + N Geräte

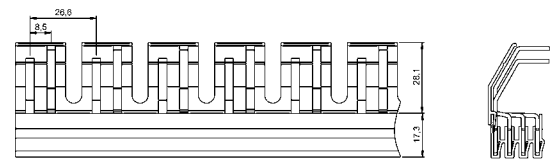
4-phase busbar for 1 + N devices



4S16V00S0B00-01	3931/16	4	S	16	L	114	17,8	1000		A10
4S16V00K0B00-01	3591	4	S	16	L	114	18	1000		A10

4-polige Sammelschiene für 1 + N Geräte mit Hilfsschalter H1

4-phase busbar for 1 + N devices with auxiliary switch H1



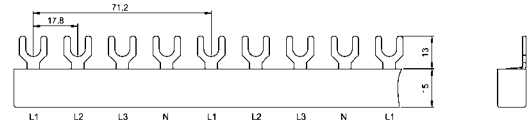
4S16V74X0A00-01	SKS0172	4	S	16	V	74	17,8	1000		A10
4S16V44X2A00-01	SKS0173	4	S	16	V	44	17,8	1000		A10

Eurovario, kompakte Bauform, nicht sägbar, anreihbar

Eurovario, compact design, not to be cut, addable

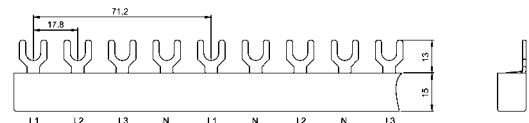
Artikel-Nr.	Bezeichnung	Anzahl Phasen	Fahnenform Gabel/Steg	Querschnitt (mm ²)	Bauform	Anzahl Fahnen	Modulbreite (mm)	Länge (mm)	Fabrikatszuordnung
Article-No.	Type	No. of phases	Fork/pin type G/S	Cross section (mm ²)	Design	No. of poles	Module width (mm)	Length (mm)	Brand relation

4-polige Eurovario Sammelschiene 4-phase eurovario busbar



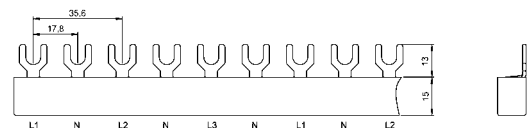
4G10E08S0A00-01	ES 40810	4	G	10	E	08	17,8	140	Cg
4G10E12S0A00-01	ES 41210	4	G	10	E	12	17,8	212	Cg
4G10E16S0A00-01	ES 41610	4	G	10	E	16	17,8	279	Cg
4G10E18S0A00-01	ES 41810	4	G	10	E	18	17,8	320	Cg
4G10E24S0A00-01	ES 42410	4	G	10	E	24	17,8	430	Cg
4G16E08S0A00-01	ES 40816	4	G	16	E	08	17,8	140	Cg
4G16E12S0A00-01	ES 41216	4	G	16	E	12	17,8	212	Cg
4G16E16S0A00-01	ES 41616	4	G	16	E	16	17,8	279	Cg
4G16E18S0A00-01	ES 41816	4	G	16	E	18	17,8	320	Cg
4G16E24S0A00-01	ES 42416	4	G	16	E	24	17,8	430	Cg

4-polige Eurovario Sammelschiene, für FI/LS Kombination 4-phase eurovario busbar, for RCBO combination

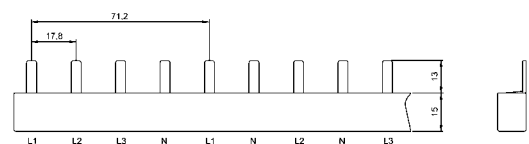


4G10E08S0A0F-01	ES 40810FI/LS	4	G	10	E	08	17,8	140	Cg
4G10E12S0A0F-01	ES 41210FI/LS	4	G	10	E	12	17,8	214	Cg
4G16E08S0A0F-01	ES 40816FI/LS	4	G	16	E	08	17,8	140	Cg
4G16E12S0A0F-01	ES 41216FI/LS	4	G	16	E	12	17,8	214	Cg

4-polige Eurovario Sammelschiene 4-phase eurovario busbar



4G10E12S0A0N-01	ES 41210N	4	G	10	E	12	17,8	212	Cg
4G10E18S0A0N-01	ES 41810N	4	G	10	E	18	17,8	320	Cg
4G16E12S0A0N-01	ES 41216N	4	G	16	E	12	17,8	212	Cg
4G16E18S0A0N-01	ES 41816N	4	G	16	E	18	17,8	320	Cg



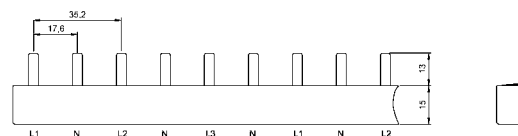
4S10E08A0A00-01	ES S40810A	4	S	10	E	08	17,6	140	As
4S10E12A0A00-01	ES S41210A	4	S	10	E	12	17,6	212	As
4S16E08A0A00-01	ES S40816A	4	S	16	E	08	17,6	140	As
4S16E12A0A00-01	ES S41216A	4	S	16	E	12	17,6	212	As

Eurovario, kompakte Bauform, nicht sägbar, anreihbar

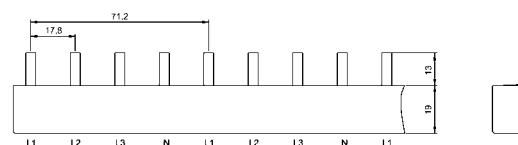
Eurovario, compact design, not to be cut, addable

Artikel-Nr.	Bezeichnung	Anzahl Phasen	Fahnenform Gabel/Steg	Querschnitt (mm ²)	Bauform	Anzahl Fahnen	Modulbreite (mm)	Länge (mm)	Fabrikationszuordnung
Article-No.	Type	No. of phases	Fork/pin type G/S	Cross section (mm ²)	Design	No. of poles	Module width (mm)	Length (mm)	Brand relation

4-polige Eurovario Sammelschiene 4-phase eurovario busbar

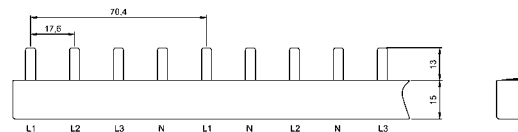


4S10E12A0A0N-01	ES S41210NA	4	S	10	E	12	17,6	210	As
4S10E13A0A0N-01	ES S41310NA	4	S	10	E	13	17,6	228	As
4S10E16A0A0N-01	ES S41610NA	4	S	10	E	16	17,6	278	As
4S10E18A0A0N-01	ES S41810NA	4	S	10	E	18	17,6	315	As

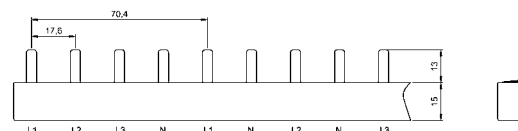


4S10E08S0A00-01	ES S40810	4	S	10	E	08	17,8	140	Cs
4S10E12S0A00-01	ES S41210	4	S	10	E	12	17,8	212	Cs
4S10E16S0A00-01	ES S41610	4	S	10	E	16	17,8	279	Cs
4S10E18S0A00-01	ES S41810	4	S	10	E	18	17,8	320	Cs
4S10E24S0A00-01	ES S42410	4	S	10	E	24	17,8	430	Cs
4S16E08S0A00-01	ES S40816	4	S	16	E	08	17,8	140	Cs
4S16E12S0A00-01	ES S41216	4	S	16	E	12	17,8	212	Cs
4S16E16S0A00-01	ES S41616	4	S	16	E	16	17,8	279	Cs
4S16E18S0A00-01	ES S41816	4	S	16	E	18	17,8	320	Cs
4S16E24S0A00-01	ES S42416	4	S	16	E	24	17,8	430	Cs

4-polige Eurovario Sammelschiene, für FI/LS Kombination 4-phase eurovario busbar, for RCBO combination



4S10E08A0A0F-01	ES S40810FI/LS A	4	S	10	E	8	17,6	140	As
4S10E12A0A0F-01	ES S41210FI/LS A	4	S	10	E	12	17,6	210	As
4S10E14A0A0F-01	ES S41410FI/LS A	4	S	10	E	14	17,6	245	As



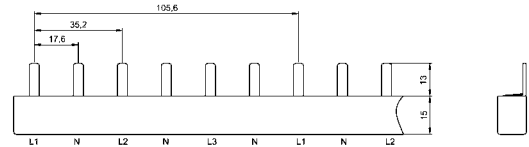
4S16E08A0A0F-01	ES S40816FI/LS A	4	S	16	E	8	17,6	140	As
4S16E12A0A0F-01	ES S41216FI/LS A	4	S	16	E	12	17,6	214	As
4S16E14A0A0F-01	ES S41416FI/LS A	4	S	16	E	14	17,6	245	As
4S16E16A0A0F-01	ES S41616FI/LS A	4	S	16	E	16	17,6	279	As

Eurovario, kompakte Bauform, nicht sägbar, anreihbar

Eurovario, compact design, not to be cut, addable

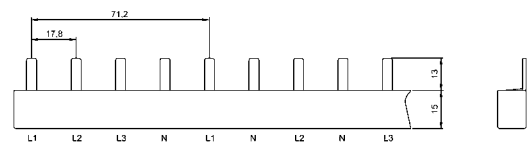
Artikel-Nr.	Bezeichnung	Anzahl Phasen	Fahnenform Gabel/Steg	Querschnitt (mm ²)	Bauform Design	Anzahl Fahnen	Modulbreite (mm) Module width (mm)	Länge (mm)	Fabrikatszuordnung
Article-No.	Type	No. of phases	Fork/pin type G/S	Cross section (mm ²)		No. of poles		Length (mm)	Brand relation

4-polige Eurovario Sammelschiene 4-phase eurovario busbar



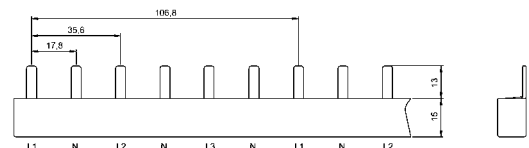
4S16E12A0A0N-01	ES S41216N A	4	S	16	E	12	17,6	214	As
4S16E18A0A0N-01	ES S41816N A	4	S	16	E	18	17,6	320	As

4-polige Eurovario Sammelschiene, für FI/LS Kombination 4-phase eurovario busbar, for RCBO combination

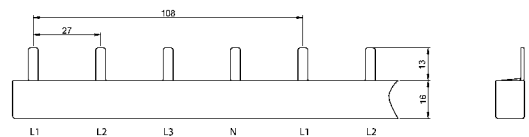


4S10E08S0A0F-01	ES S40810FI/LS	4	S	10	E	08	17,8	140	Cs
4S10E12S0A0F-01	ES S41210FI/LS	4	S	10	E	12	17,8	214	Cs
4S16E08S0A0F-01	ES S40816FI/LS	4	S	16	E	08	17,8	140	Cs
4S16E12S0A0F-01	ES S41216FI/LS	4	S	16	E	12	17,8	214	Cs

4-polige Eurovario Sammelschiene 4-phase eurovario busbar



4S10E12S0A0N-01	ES S41210N	4	S	10	E	12	17,8	212	Cs
4S10E18S0A0N-01	ES S41810N	4	S	10	E	18	17,8	320	Cs
4S16E12S0A0N-01	ES S41216N	4	S	16	E	12	17,8	212	Cs
4S16E18S0A0N-01	ES S41816N	4	S	16	E	18	17,8	320	Cs



4S10E08N0A00-01	ES S42708	4	S	10	E	8	27	210	Ns
4S10E12N0A00-01	ES S42712	4	S	10	E	12	27	312	Ns
4S10E16N0A00-01	ES S42716	4	S	10	E	16	27	420	Ns